

# PRODUCT CATALOG



Shenzhen Unishine Electronics Co.,Ltd.

Global Provider of LED Display Solutions

2026



# U-RP

## P2.6/2.97/3.91 Stage LED Screen

1. Robust and weather-resistant design ideal for outdoor events;
2. High-definition visuals with detailed imagery for professional displays;
3. Die-Casting Aluminum Cabinet, durable and lightweight, ensuring stability during use;
4. Protects against dust and water, suitable for various environments;
5. Easy to mount on walls, floors, or custom setups;
6. Full set of Stage LED Display Screen;
7. 500sqm stock in warehouse.



# Parameter

U-RP (Outdoor)			
Pixel pitch(mm)	2.6	2.97	3.91
Cabinet Size	500*1000	500*1000	500*1000
Pixel density(dots/m <sup>2</sup> )	147456	112896	65536
LED encapsulation	SMD1515	SMD1515	SMD1921
Driving method	1/32	1/28	1/16
Resolution of cabinet (dot)	192*192	168*168	128*128
Module size(mm)	250*250*18	250*250*18	250*250*18
Max.consumption(W/m <sup>2</sup> )	300	300W	280W
Ave.consumption(W/m <sup>2</sup> )	160	160W	140W
Brightness(CD/m <sup>2</sup> )	4000	4000CD/	4000
Color temperature(K)	6500-8500	6500-8500	6500-8500
View angle(H/V)	H: 160°; V: 160°	H: 160°; V: 160°	H: 160°; V: 160°
Refresh rate(Hz)	3840-7680	3840-7680	3840-7680
Working temperature (°C)	-10~+60°C	-10~+60°C	-10~+60°C
Protect degree(F/B)	IP65	IP65	IP65
Grey / scale (bit)	14	14	14
Input Voltage	AC100-240V 50/60Hz	AC100-240V 50/60Hz	AC100-240V 50/60Hz
Protect degree(F/B)	IP65 / IP63	IP65 / IP63	IP65 / IP63
Weight(kg/sqm)	16	16	16

# U-Rent

## P2.6/2.97/3.91 Stage Rental LED Screen



1. High precision cast aluminum cabinet;
2.  $500*1000 \leq 11.5\text{KG/cabinet}$ , with a thickness of only 76mm;
3. Optional curved lock, capable of splicing large screens with - 10 to 15 ° camber, 90°corner, etc;
4. Optional magnetic module can achieve complete assembly, disassembly and maintenance of the module and power supply front the front;
5. Work in silence: no fan, noise  $\leq 40\text{DB}$ ; Not affecting the on-site audio-visual effect;
6. Background large screen optimization plan; High refresh, SLR, camera 1/3000S shutter capture, no flicker, no ghost scanning line;
7. Indoor and outdoor universal pixel pitches with P2.6/2.9/3.9 ets; Specialized in providing overall LED display solutions for events, conferences, stage, product launches, and real estate.



# Parameter

U-Rent (Outdoor)			
Pixel pitch(mm)	2.6	2.97	3.91
Pixel density(dots/m <sup>2</sup> )	147456	112896	65536
LED encapsulation	SMD1515	SMD1515	SMD1921
Driving method	1/24	1/21	1/16
Resolution of module (dot)	96*96	84*84	64*64
Module size(mm)	250*250*18	250*250*18	250*250*18
Working voltage(V)	4.6	4.6	4.6
Max.consumption(W/m <sup>2</sup> )	800W	800	800
Ave.consumption(W/m <sup>2</sup> )	400W	400	400
Brightness(CD/m <sup>2</sup> )	4500	4500	4500
Color temperature(K)	3000-10000K adjustable	3000-10000K adjustable	3000-10000K adjustable
View angle(H/V)	H: 160°; V: 160°	H: 160°; V: 160°	H: 160°; V: 160°
Refresh rate(Hz)	7680H	7680	7680
Working temperature (°C)	- 10~40°C	- 10~40°C	- 10~40°C
Protect degree(F/B)	IP65	IP65	IP65
Grey / scale (bit)	16	16	16

# U-Panel

## COB LED Video Wall

1. All-inverted chip enclosures as the display module light, and the driving chip is placed on the back of the PCB board, which can directly control the working state of the LED chips.
2. The LED display module is designed for easy maintenance, and professional suction tools are provided for installation and debugging.
3. Unique surface treatment technology, excellent ink color consistency and contrast, achieving good display effect.
4. The high-definition picture quality refresh rate reaches 3840Hz.
5. High reliability, all-inverted, integrated packaging. Lamp drive integration, constant current drive, uniform light emission, low power consumption.
6. Front light source, wide viewing angle, good display effect.
7. The disassembly and assembly process of the display module is simple.



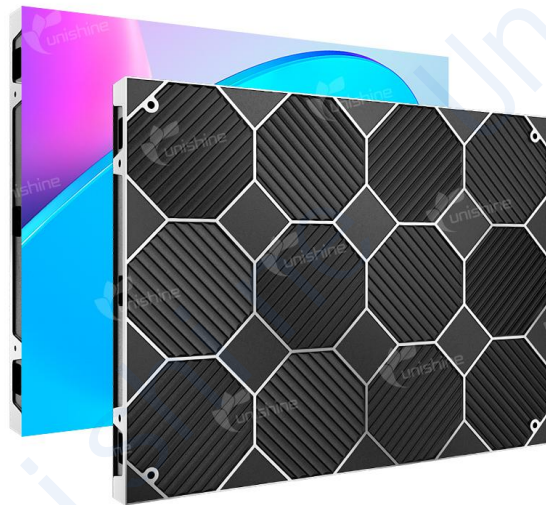
# Parameter

U-Panel			
Pixel pitch(mm)	0.78	0.93	1.25
LED encapsulation	COB	COB	COB
Driving method	1/48	1/54	1/60
Module Resolution(WxH)	192*216	160*480	120*135
Cabinet Resolution(WxH)	768*432	640*320	480*270
Cabinet Material	Die-casting Cabinet	Die-casting Cabinet	Die-casting Cabinet
Module size(mm)	150*168.75	150*168.75	150*168.75
Cabinet Size(mm)	600*337.5	600*337.5	600*337.5
Cabinet Weight(kg/cabinet)	4.5	4.5	4.5
Working voltage(V)	Front	Front	Front
Maintenance Method	4.2V / 3.2V	4.2V / 3.2V	4.2V / 3.2V
Max.consumption(W/m <sup>2</sup> )	≤300	≤300	≤300
Ave.consumption(W/m <sup>2</sup> )	186	186	186
Brightness(CD/m <sup>2</sup> )	≥600	≥600	≥600
Contast ratio	≥10000:1	≥10000:1	≥10000:1
Refresh rate(Hz)	3840	3840	3840
Working temperature (°C)	-20°C~+60°C	-20°C~+60°C	-20°C~+60°C

# U-DM

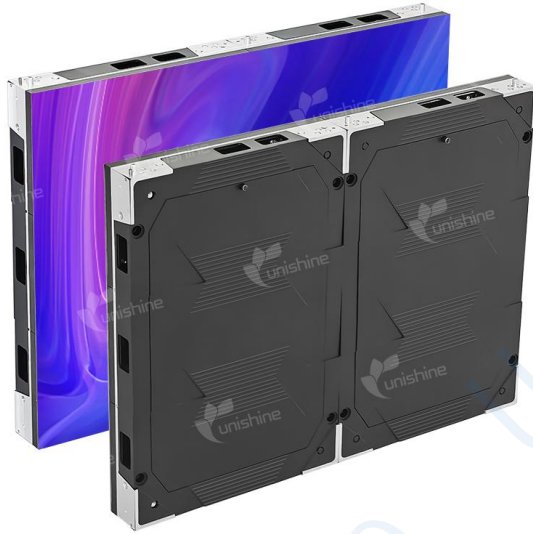
## Ultra-thin Indoor LED Video Wall

1. 32mm thickness, 18% thinner and lighter, easier handling and installation.
2. Fully Sealed for Lasting Protection: The dustproof and humidity-resistant design ensures reliable performance in any indoor environment.
3. Breathtaking Visual Quality: HDR10 and deep black contrast bring images to life with rich colors and exceptional grayscale depth, while maintaining uniform brightness even in dim lighting.
4. Comfortable Viewing, Day or Night: Enjoy reduced eye strain at night and crystal-clear visibility during the day, perfect for around-the-clock use.
5. Tailored for Premium Indoor Spaces: Designed for control rooms, broadcast studios, corporate lobbies, home theater and other high-end applications.

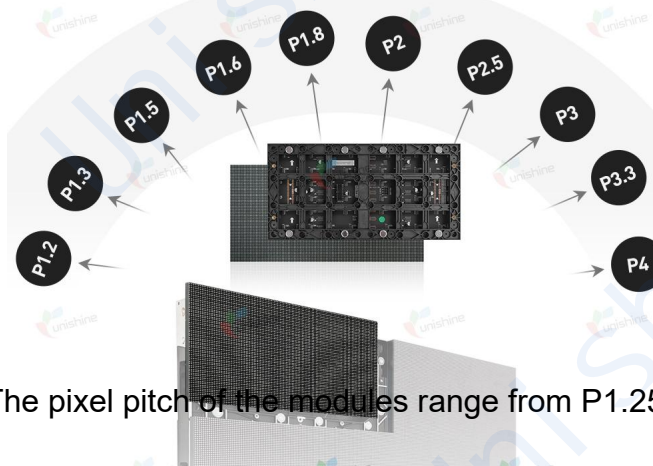


# Parameter

U-DM				
Pixel pitch(mm)	1.25	1.53	1.86	2.5
LED encapsulation	SMD1515	SMD1515	SMD1515	SMD1515
Driving method	1/64	1/64	1/43	1/32
Cabinet size(mm)	640*320*32	640*320*32	640*320*32	640*320*32
Cabinet module(dot)	512*384	416*312	344*258	256*192
Cabinet weight(kg)	5.5	5.5	5.5	5.5
Working voltage(V)	110V~220V	110V~220V	110V~220V	110V~220V
Max.consumption(W/pcs)	≤120	≤110	≤105	≤90
Ave.consumption(W/m <sup>2</sup> )	50-80	30-45	25-45	20-40
Brightness(CD/m <sup>2</sup> )	≥500	≥500	≥500	≥500
Refresh rate	≥3840	≥3840	≥3840	≥3840
Contrast radio	4000:1	4000:1	4000:1	4000:1
View angle(H/V)	120° / 120°	120° / 120°	120° / 120°	120° / 120°
Working temperature (°C)	-10~60	-10~60	-10~60	-10~60
Protect degree(F/B)	IP30	IP30	IP30	IP30
Grey / scale (bit)	14	14	14	14



The cabinet can be quickly replaced with module of the pixel pitch from P1.25 to P4

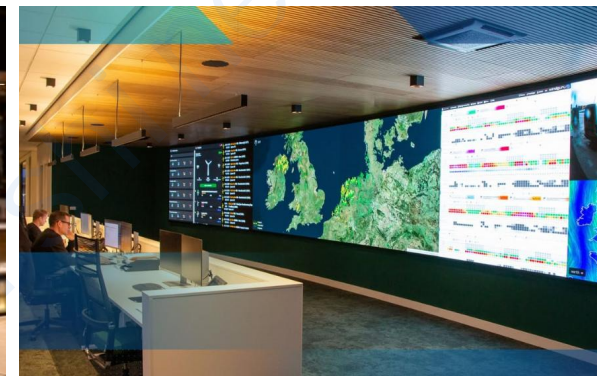


The pixel pitch of the modules range from P1.25 to P4

# U-MAX

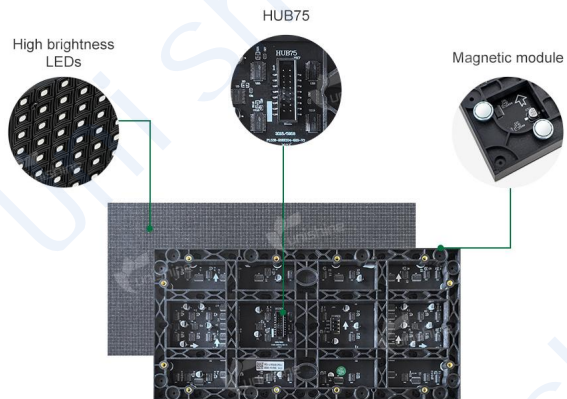
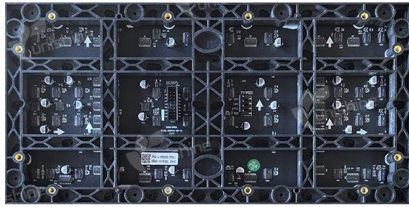
## Indoor Front Maintenance Wall-mounted LED Display

1. Ready stock: Ready stock in warehouse;
2. High precision: Die-cast aluminum cabinet, high precision and good flatness;
3. Good compatibility: The cabinet can be quickly replaced with module of the pixel pitch from P1.25 to P4, and images can be upgraded to higher quality with lower cost;
4. Ultra-light and thin: Die-cast aluminum cabinet, light-weighted, thin, beautiful appearance;
5. Wall-mounted installation: modules, power supplies, and system cards can be fully;
6. maintained from the front; space-saving, suitable for high-end commercial display occasions;
7. Ratio: Can be assembled to 4:3, 16:9 large screens; the same video source ratio as LCD, and can directly replace the original LCD;
8. Widely used in auditorium stage, conference room, banquet hall, exhibition studio, traffic command, security monitoring and other occasions.



# Parameter

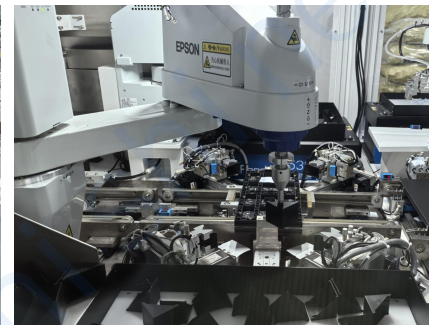
U-MAX		
Pixel pitch(mm)	1.86	2.5
Pixel density(dots/m <sup>2</sup> )	288906	160000
LED encapsulation	SMD1515	SMD2020
Driving method	1/43	1/32
Module resolution (dot)	172*86	128*64
Module size(mm)	320*160	320*160
Module consumption(W)	20	20
Working voltage(V)	4.6	4.6
Max.consumption(W/m <sup>2</sup> )	≤550	≤550
Ave.consumption(W/m <sup>2</sup> )	180	180
Brightness(CD/m <sup>2</sup> )	600	600
Color temperature(K)	6000K-8000K	6000K-8000K
View angle(H/V)	120° / 120°	120° / 120°
Refresh rate(Hz)	3840	3840
Working temperature (°C)	-10~40	-10~40
Protect degree(F/B)	IP40	IP40
Grey / scale (bit)	14	14



# U-IM

## Full Color Indoor LED Module

1. High-quality lamps, high lamp brightness utilization, while ensuring the service life of the lamps and high-quality plastic parts;
2. High reach can achieve good display effects;
3. Light weight, easy to install and sensitive;
4. Single point and single lamp maintenance is possible with low cost;
5. Using constant current mode to drive LED, the light is uniform and the power consumption is low.



The pixel pitch of the modules range from P1.25 to P4

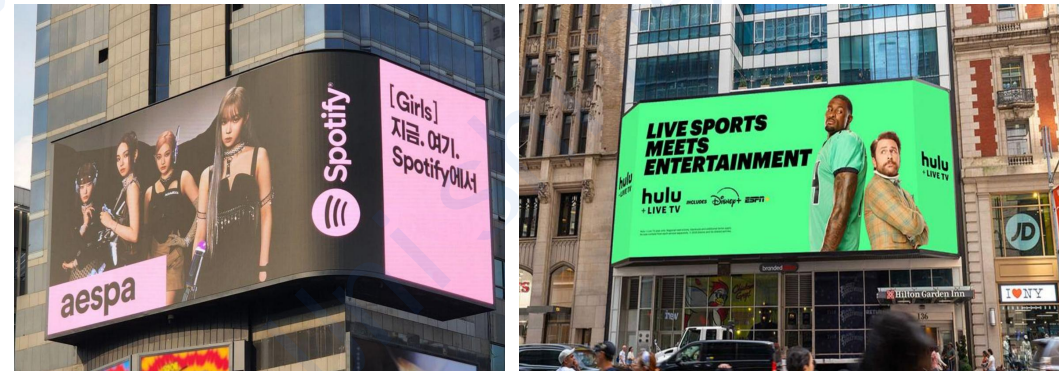
# Parameter

U-IM				
Pixel pitch(mm)	1.53mm	1.86 mm	2.0 mm	2.5 mm
Pixel density(dots/m <sup>2</sup> )	422500 dots/m <sup>2</sup>	288906Dots/m <sup>2</sup>	250000Dots/m <sup>2</sup>	160000Dots/m <sup>2</sup>
LED encapsulation	SMD1212	SMD1515	SMD1515	SMD2020
Driving method	1/52S	1/43S	1/40S	1/32S
Resolution of module (dot)	208*104 Dots	172*86 Dots	160*80 Dots	128*64 Dots
Module size(mm)	320*160*16.2 mm	320*160*16.2 mm	320*160*16.2 mm	320*160*16.2 mm
Module consumption(W)	≤22W	≤20W	≤20W	≤20W
Working voltage(V)	DC4.2~5V	DC4.2~5V	DC4.2~5V	DC4.2~5V
Driving Method	Constant Current	Constant Current	Constant Current	Constant Current
Panel Current	≤5A	≤4A	≤4A	≤4A
Brightness(CD/m <sup>2</sup> )	≥550cd/m <sup>2</sup>	≥550cd/m <sup>2</sup>	≥550cd/m <sup>2</sup>	≥550cd/m <sup>2</sup>
View angle(H/V)	H: 160°; V: 140°	H: 160°; V: 140°	H: 160°; V: 140°	H: 160°; V: 140°
Refresh rate(Hz)	3840Hz	3840Hz	3840Hz	3840Hz
Working temperature (°C)	-10~40°C	-10~40°C	-10~40°C	-10~40°C
Protect degree(F/B)	IP40	IP40	IP40	IP40

# U-Rugged

## Energy Saving IP66 Outdoor LED Display

1. Die-casting aluminum cabinet Outdoor Advertising LED Display
2. P4.44 / P5.7 / P6.67 / P8 / P10 pixel pitch
3. The cabinet weighs only 25kg and has a thickness of 85mm
4. It supports front-rear service. Module adopts fast lock to have more convenient installation and dismantlement.
5. Support 90° curved splicing.
6. Multiple unique heat dissipation designs, contact thermal conductance accelerates heat dissipation, fin Shape Structure for bigger heat dissipation area. Reduces the entire screen's temperature by 20% compared to other traditional led displays.



# Parameter

U-Rugged					
Pixel pitch(mm)	4.44	5.7	6.67	8	10
LED encapsulation	SMD1921	SMD2727	SMD2727	SMD2727	SMD2727
Driving method	1/9	1/7	1/6	1/3	1/2
Module Resolution(WxH)	108*72	84*56	72*48	60*40	48*32
Cabinet Resolution(WxH)	216*216	168x168	144x144	120x120	96x96
Cabinet Material	Die-casting Cabinet	Die-casting Cabinet	Die-casting Cabinet	Die-casting Cabinet	Die-casting Cabinet
Module size(mm)	480*320	480*320	480*320	480*320	480*320
Cabinet Size(mm)	960×960×85	960×960×85	960×960×85	960×960×85	960×960×85
Cabinet Weight(kg/cabinet)	25	25	25	25	25
Working voltage(V)	Front & Rear	Front & Rear	Front & Rear	Front & Rear	Front & Rear
Maintenance Method	4.2V / 3.2V	4.2V / 3.2V	4.2V / 3.2V	4.2V / 3.2V	4.2V / 3.2V
Max.consumption(W/m <sup>2</sup> )	≤550	≤550	≤550	≤550	≤550
Ave.consumption(W/m <sup>2</sup> )	186	186	186	186	186
Brightness(CD/m <sup>2</sup> )	≥5500	≥7000	≥7000	≥7000	≥7000
Refresh rate(Hz)	3840 / 7680	3840 / 7680	3840 / 7680	3840 / 7680	3840 / 7680
Working temperature (°C)	-20°C~+60°C	-20°C~+60°C	-20°C~+60°C	-20°C~+60°C	-20°C~+60°C
Protect degree(F/B)	IP66	IP66	IP66	IP66	IP66

# U-Shield

## High Brightness Outdoor LED Display



1. 1000\*1000mm Die-casting magnesium alloy cabinet Outdoor LED Display
2. Double maintenance, simple operation, quick installation and maintenance.
3. Really save worry, effort and time.
4. Adopt waterproof and dustproof design, and the protection level is IP65+ before/after.
5. Can resist wind and rain erosion and dust pollution, and is suitable for various outdoor environments.
6. Quick, convenient and flexible installation Seamless splicing technology supporting multiple installation methods.
7. 20000cd high brightness optional.



# Parameter

U-Shield						
Pixel pitch(mm)	2.97	3.91	4.81	6.25	7.81	10.42
Pixel density(dots/m <sup>2</sup> )	112896	65536	43264	25600	16384	9216
LED encapsulation	SMD1415	SMD1921	SMD1921	SMD2727	SMD2727 / 3535	SMD2727 / 3535
Driving method	1/21	1/16	1/13	1/5	1/4	1/2
Resolution of module (dot)	168*84	128*64	104*52	80*40	64*32	48*24
Module size(mm)	320*160	320*160	320*160	320*160	320*160	320*160
Module consumption(W)	24	24	24	24	24	24
Working voltage(V)	4.2V / 3.2V	4.2V / 3.2V	4.2V / 3.2V	4.2V / 3.2V	4.2V / 3.2V	4.2V / 3.2V
Max.consumption(W/m <sup>2</sup> )	< 550	< 550	< 550	< 550	< 550	< 550
Ave.consumption(W/m <sup>2</sup> )	150	150	150	150	150	150
Brightness(CD/m <sup>2</sup> )	4000-6000	4000-6000	4000-6000	5500-10000	5500-10000 /20000	5500-10000
Cabinet Size(mm)	1000*1000	1000*1000	1000*1000	1000*1000	1000*1000	1000*1000
Module Size(mm)	500*2550	500*2550	500*2550	500*2550	500*2550	500*2550
Refresh rate(Hz)	3840 / 7680	3840 / 7680	3840 / 7680	3840 / 7680	3840 / 7680	3840 / 7680
Cabinet Weight(kg)	23	23	23	23	23	23
Working temperature (°C)	-20°C~+60°C	-20°C~+60°C	-20°C~+60°C	-20°C~+60°C	-20°C~+60°C	-20°C~+60°C
Protect degree(F/B)	IP65	IP65	IP65	IP65/IP54	IP65/IP54	IP65/IP54



# U-Fit

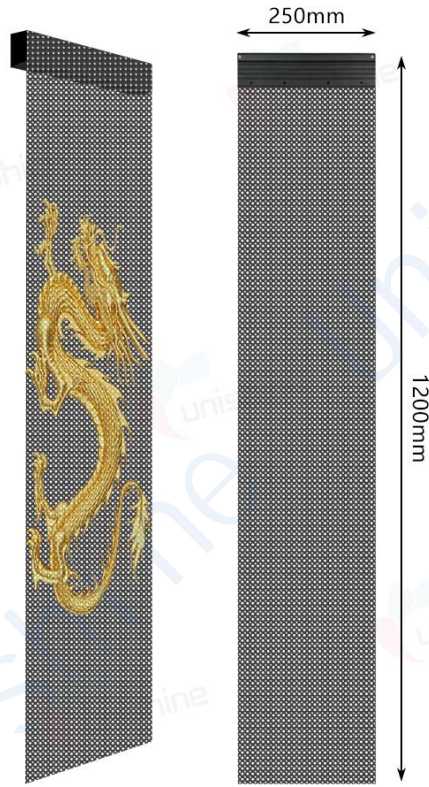
## Outdoor HD LED Display

1. Adopting a new structural design, lightweight, beautiful and no deformation, easy and flat assemble;
2. Brightness 6000CD/m<sup>2</sup>, the picture is still clear under strong light;
3. The cabinet is adapted to P2.5~P16 modules, no need to change the cabinet for upgrade, saving manpower and cabinet costs;
4. IP65 protection grade; good sealing, cost-effective;
5. Integrally formed;
6. Ultra-thin and light.



# Parameter

U-Fit						
Pixel pitch(mm)	4	5	6.67	8	10	10
Pixel density(dots/m <sup>2</sup> )	62500	40000	22477	15625	10000	10000
LED encapsulation	SMD1921	SMD1921	SMD3535	SMD3535	SMD3535	DIP346
Driving method	1/10	1/8	1/6	1/4	1/2	1/4
Resolution of module (dot)	80*40	64*32	48*24	40*20	32*16	32*16
Module size(mm)	320*160	320*160	320*160	320*160	320*160	320*160
Module consumption(W)	16	16	16	16	16	12
Working voltage(V)	DC5	DC5	DC5	DC5	DC5	DC5
Max.consumption(W/m <sup>2</sup> )	720	720	720	720	720	720
Ave.consumption(W/m <sup>2</sup> )	240	240	240	240	240	200
Brightness(CD/m <sup>2</sup> )	5000	5000	5500	5000	6000	4500
Color temperature(K)	8500	8500	8500	8500	8500	8500
View angle(H/V)	170°/120°	170°/120°	170°/120°	170°/120°	170°/120°	170°/120°
Refresh rate(Hz)	1920	1920	1920	1920	1920	1920
Working temperature (°C)	-20°C~+60°C	-20°C~+60°C	-20°C~+60°C	-20°C~+60°C	-20°C~+60°C	-20°C~+60°C
Protect degree(F/B)	IP65	IP65	IP65	IP65/IP54	IP65/IP54	IP65/IP54
Grey / scale (bit)	14	14	14	14	14	14



# Uni-G

## Invisible Mesh LED Display

1. Invisible Design: Invisible mesh screen, no obstruction to visibility or lighting;
2. Easy to Install: Preserves original space structure, supporting hanging, embedded installations;
3. Tailor Match: Customizable screen size to seamlessly integrate with store window dimensions. Etc;
4. Floating Display: Suspended visuals with 3D holographic and naked eye AR effects;
5. High Brightness: Meeting semi-outdoor applications, such as storefront windows, etc.



# Parameter

Uni-G					
Pixel pitch(mm)	3.91	4.8	6.25	3.91	6.25
Resolution of module (dot)	64*307	52*250	40*192	64*384	40*320
Module size(mm)	250*1200	250*1200	250*1200	250*1500	250*2000
Pixel density(dots/m <sup>2</sup> )	65536	43258	25600	65536	25600
LED encapsulation	DH-C1717IBNR-LA	DH-C1717IBANR-LA	DH-C1717IBANR-LA	DH-C1717IBANR-LA	RF-H2SA22HS-A47-IC3-A
Driving IC	LS9001	LS9001	LS9001	LS9001	TA8028EP
Material	Aluminum	Aluminium alloy	Aluminium alloy	Aluminum	Aluminum
Cabinet Weight(kg/pcs)	5kg/pcs	5kg/pcs	5kg/pcs	5.3kg/pcs	2kg
Working voltage(V)	DC4.6	DC4.6	DC4.6	DC4.6	DC4.6
Max.consumption(W/m <sup>2</sup> )	≤850	≤800	≤700	≤850	≤800
Ave.consumption(W/m <sup>2</sup> )	≤300	≤300	≤250	≤300	≤250
Visual Transparency (%)	≥80%	≥58%	≥90%	≥90%	≥90%
Brightness(CD/m <sup>2</sup> )	3500	≥3500	≥3500	≥3500	≥3500
Color temperature(K)	6500-9000K	6500-9000K	6500-9000K	6500-9000K	6500-9000K
View angle(H/V)	160°/160°	160°/160°	160°/160°	160°/160°	160°/160°
Refresh rate(Hz)	3840	3840	3840	3840	3840
Working temperature (°C)	-20°C~+50°C	-20°C~+65°C	-20°C~+50°C	-20°C~+50°C	-20°C~+50°C
Grey / scale (bit)	13	16	13	16	16
Control System	Colorlight	Colorlight	Colorlight	Colorlight	Novastar
Protect degree(F/B)	IP20	IP20	IP20	IP20	IP20

# Uni-F

## Invisible Mesh All-in-One LED Display



1. Plug and Play: Standard all-in-one display, powered on to auto plays, with program playing via mobile App;
2. Invisible Design: Invisible mesh screen, no obstruction to visibility or lighting;
3. Easy to Install: Preserves original space structure, supporting hanging, portable stand, and other install ways;
4. High Brightness: Meeting semi-outdoor applications, such as storefront windows, etc;
5. Floating Display: Suspended visuals with 3D holographic and naked eye AR effects.



# Parameter

Uni-F			
Pixel pitch(mm)	3.91	4.8	6.25
Resolution of module (dot)	64*307	56*298	40*192
Module size(mm)	250*1200	270*1460	250*1200
Pixel density(dots/m <sup>2</sup> )	65536	42921	25600
LED encapsulation	DH-C1717IBNR-LA	SY-ADW1415-T	DH-C1717IBNR-LA
Display size(mm)	750*1200	810*1440	750*1200
Cabinet size(mm)	771*1368 (with hanging bar) 771*1568 (with pulley)	830*1605 (with hanging bar) 830*1805 (with pulley)	771*1368 (with hanging bar) 771*1568 (with pulley)
Cabinet Weight(kg/pcs)	5.5kg/pcs	8.5kg/pcs	5kg/pcs
Working voltage(V)	DC4.6	DC4.6	DC4.6
Max.consumption(W/m <sup>2</sup> )	≤800	≤800	≤650
Ave.consumption(W/m <sup>2</sup> )	≤260	≤260	≤200
Visual Transparency (%)	≥90%	≥80%	≥90%
Brightness(CD/m <sup>2</sup> )	3500	2000	3500
Color temperature(K)	6500-9000K	6500-9000K	6500-9000K
View angle(H/V)	160°/160°	160°/160°	160°/160°
Refresh rate(Hz)	3840	1920~3840	3840
Working temperature (°C)	-20°C~+50°C	-20°C~+50°C	-20°C~+50°C
Grey / scale (bit)	13	13	13
Protect degree(F/B)	IP20	IP20	IP20

# Uni-U

## P3.91/6.25 Holographic Invisible Screen

1. Global First Holographic Invisible Display;
2. Visual Miracle of Seeing Images Without the Screen;
3. Cinema-Grade HD Stable Image Quality;
4. Naked-Eye AR Floating Visual Effects;
5. Ultra-Simplified Integrated Design;
6. Intelligent Calibration, Maintenance-Free;
7. Flexible & Cuttable, Versatile Adaptation;
8. Ultra-Light & Ultra-Thin, Boundless Applications.



# Parameter

Uni-U	U3	U6
Pixel pitch(mm)	3.91-3.91 mm	6.25-6.25mm
Pixel density(dots/m <sup>2</sup> )	65536 Dots/m <sup>2</sup>	25600 Dots/m <sup>2</sup>
LED encapsulation	SMD2121	SMD2121
Transparency Rate	92%	95%
Resolution of module (dot)	64*256 / 64*307 / 64*384 Dots	40*152 / 40*182 / 40*232 Dots
Module size(mm)	250*1000 / 250*1199 / 250*1500mm	250*953 / 250*1153 / 250*1453mm
Input Voltage	AC100-240V 50/60Hz	AC100-240V 50/60Hz
Max.consumption(W/m <sup>2</sup> )	560W/m <sup>2</sup>	560W/m <sup>2</sup>
Ave.consumption(W/m <sup>2</sup> )	232W/m <sup>2</sup>	232W/m <sup>2</sup>
Brightness(CD/m <sup>2</sup> )	≥3000(Black Body), Module Size≤1200mm ≥2000(Black Body), Module Size≤1500mm	≥3000(Black Body) ≥4000(White Body), Module Size≤1200mm ≥2000(Black Body) ≥3000(White Body), Module Size≤1500mm
Calibration Parameters	Module/Receiver Card Flash Calibration Storage	Module/Receiver Card Flash Calibration Storage
Color temperature(K)	6500K	6500K
Weight(kg/set)	1.5KG/(1000*1000) / 1.6KG(1000*1199) /1.7KG(1000*1500)	1.5KG/(1000*1000) / 1.6KG(1000*1200) / 1.7KG(1000*1500)
View angle(H/V)	H: 160°; V: 160°	H: 160°; V: 160°
Refresh rate(Hz)	3840Hz	3840Hz
Working temperature (°C)	-20°C~+50°C	-20°C~+50°C
Working Humidity	Humidity: 20%-85%(Without Condensation)	Humidity: 20%-85%(Without Condensation)
Protect degree(F/B)	IP20	IP20
Installation Method	Hanging Up, Fixed Mounting, PCB Side Glued	Hanging Up, Fixed Mounting, PCB Side Glued

# Uni-P

## P2 / 3 / 6 Holographic Invisible Screen

1. Standard all-in-one machine;
2. Built-in sending card, only one power supply cable, plug in and play;
3. Whole screen transparent and invisible;
4. Standard hanging structure, easy installation;
5. Bare-eye AR visual effect, eye-catching and attractive;
6. Free combined size, 55", 70", 100", 135";
7. High-resolution display quality, stable video and image, rich and delicate colors.



# Parameter

Uni-P	P2	P3	P6
Pixel pitch(mm)	2.5mm	3.91mm	6.25mm
Pixel density(dots/m <sup>2</sup> )	160000 Dots/m <sup>2</sup>	65536 Dots/m <sup>2</sup>	25560 Dots/m <sup>2</sup>
LED encapsulation	SMD1515	SMD2121	SMD2121
Transparency Rate	85%	92%	95%
Resolution (dot)	400x590 / 300x470 Dots	256*376 / 192*300 Dots	160*236 / 120*188 Dots
Display Dimension(mm)	1000*1475 / 750*1175 mm	1000*1469 / 750*1172mm	1000*1475 / 750*1175mm
Profile Dimension(mm)	1016*1592*78 / 766*1294*78 mm	1016*1592*78 / 766*1291.5*78	1016*1592*78 / 766*1291.5*78
Screen Dimension(inch)	70 / 55 inch	70 / 55 inch	70 / 55 inch
Brightness(cd/m <sup>2</sup> )	≥1200 (Black Light)	≥3000 (Black Light), ≥4500 (white Light)	≥4500 (white Light)
Max.consumption(W/m <sup>2</sup> )	865W/m <sup>2</sup>	865W/m <sup>2</sup>	865W/m <sup>2</sup>
Ave.consumption(W/m <sup>2</sup> )	350W/m <sup>2</sup>	350W/m <sup>2</sup>	350W/m <sup>2</sup>
Color temperature(K)	3000-10000K	3000-10000K	3000-10000K
Scanning Mode	Static Driving (Single Pixel Single Control)	Static Driving (Single Pixel Single Control)	Static Driving (Single Pixel Single Control)
Encapsulation Type	Light Board & Driving Board Integrated	Light Board & Driving Board Integrated	Light Board & Driving Board Integrated
View angle(H/V)	H: 160°; V: 160°	H: 160°; V: 160°	H: 160°; V: 160°
Input Voltage	AC100-240V 50/60Hz	AC100-240V 50/60Hz	AC100-240V 50/60Hz
Working Voltage	DC 4.2V ± 0.2V	DC 4.2V ± 0.2V	DC 4.2V ± 0.2V
Working temperature(°C)	-20°C~+50°C	-20°C~+50°C	-20°C~+50°C
Working Humidity	Humidity: 20%-85%(Without Condensation)	Humidity: 20%-85%(Without Condensation)	Humidity: 20%-85%(Without Condensation)
Protect degree(F/B)	IP20	IP20	IP20
Installation Method	Hanging Up	Hanging Up	Hanging Up
Packing Way	Pearl Cotton+Wooden case/Flight Case	Pearl Cotton+Wooden case/Flight Case	Pearl Cotton+Wooden case/Flight Case

# Uni-A

## P3.91 Holographic Invisible Screen

1. External dimensions: 1000\*2000mm / 2000\*2000mm
2. 9000:1 high contrast;
3. High brightness 5000cd/m<sup>2</sup>;
4. 16bit gray scale with exquisite colors;
5. Light weight of 6kg/m<sup>2</sup>;
6. The thickness of the screen is less than 2mm;
7. It can be directly attached to the front or back side of transparent glass without damaging the original structure of the building or affecting indoor lighting.



# Parameter

Uni-A	Uni-A3-2	Uni-A3-4
Pixel pitch(mm)	3.91mm	3.91mm
Pixel density(dots/m <sup>2</sup> )	65536 Dots/m <sup>2</sup>	65536 Dots/m <sup>2</sup>
Transparency Rate	80%	80%
Resolution (dot)	256*512 Dots	512*512 Dots
Display Dimension(mm)	1000*2000 mm	2000*2000 mm
Profile Dimension(mm)	1021*2230*75 / 1021*2452*500 mm	2021*2230*75 / 2021*2452*500 mm
Frame Material	Aviation Aluminum Alloy	Aviation Aluminum Alloy
Weight(Kg/set)	40kg	40kg
Brightness(cd/m <sup>2</sup> )	≥3000	≥3000
Max.consumption(W/m <sup>2</sup> )	1000W/m <sup>2</sup>	1000W/m <sup>2</sup>
Ave.consumption(W/m <sup>2</sup> )	375W/m <sup>2</sup>	375W/m <sup>2</sup>
Scanning Mode	Static Driving (Single Pixel Single Control)	Static Driving (Single Pixel Single Control)
Encapsulation Type	Light Board & Driving Board Integrated	Light Board & Driving Board Integrated
View angle(H/V)	H: 160°; V: 160°	H: 160°; V: 160°
Input Voltage	AC100-240V 50/60Hz	AC100-240V 50/60Hz
Working Voltage	DC 4.2V ± 0.2V	DC 4.2V ± 0.2V
Control System	Colorlight / Novastar	Colorlight / Novastar
Working temperature(°C)	-20°C~+50°C	-20°C~+50°C
Working Humidity	Humidity: 20%-85%(Without Condensation)	Humidity: 20%-85%(Without Condensation)
Protect degree(F/B)	IP20	IP20
Packing Way	Pearl Cotton+Wooden case/Flight Case	Pearl Cotton+Wooden case/Flight Case

# Taxi Top Double sided LED Screen

## U-Taxi



1. The shell is made of cast aluminum and transparent board, and it is installed in an inverted style, which has good rainproof effect;
2. The exterior of the screen adopts a bright surface spraying process, which can be well matched with the car paint;
3. There is a hole at the bottom of the screen for installation with the roof bracket for easy installation;
4. Using DC to DC wide voltage 9 to 36 volt power supply, which can be used by almost all cars;
5. The screen body comes with a delayed start-up function, which does not affect the start of the car;
6. Accurate and efficient with Global GPS fixed-point placement;
7. Wireless control with mobile phone and pad, and the operation interface is simple and practical;
8. Real-time monitoring of the screen;
9. Full color cloud sending Android system architecture, Full Netcom 4G communication;
10. Ali Cloud in-vehicle TAXI\_HUB dedicated platform service escorts you in-vehicle interconnection;
11. Standard WiFi module, support platform hotspot Internet access, car hotspot Internet access;
12. Support third-party APP, platform, microservice docking, safe, efficient and reliable;
13. Traffic trajectory, mileage, advertising log statistics, graphical and intuitive.



# Parameter

U-Taxi				
Pixel pitch(mm)	2.5mm	3.076mm	4mm	5mm
Pixel density(dots/m <sup>2</sup> )	160000 Dots/m <sup>2</sup>	105625 Dots/m <sup>2</sup>	64000 Dots/m <sup>2</sup>	40000 Dots/m <sup>2</sup>
LED encapsulation	SMD1415	SMD1415	SMD1921	SMD1921
Driving method	1/16S	1/13S	1/10S	1/8S
Resolution of module (dot)	128*64Dots	104*52Dots	80*40Dots	64*32Dots
Module size(mm)	320mm*160mm	320mm*160mm	320mm*160mm	320mm*160mm
Module consumption(W)	12W	14W	7.5/12W	7.5/12W
Working voltage(V)	DC5V	DC5V	DC5V	DC5V
Max.consumption(W/m <sup>2</sup> )	421W/set	486W/set	480W/set	480W/set
Ave.consumption(W/m <sup>2</sup> )	150W/set	160W/set	144W/set	144W/set
Brightness(CD/m <sup>2</sup> )	4500 CD/m <sup>2</sup>	4500 CD/m <sup>2</sup>	4500 CD/m <sup>2</sup>	4500 CD/m <sup>2</sup>
Color temperature(K)	6000k-8000k	6000k-8000k	6000k-8000k	6000k-8000k
View angle(H/V)	H: 170°; V: 120°	H: 170°; V: 120°	H: 170°; V: 120°	H: 170°; V: 120°
Refresh rate(Hz)	3840Hz	3840Hz	3840Hz	3840Hz
Working temperature (°C)	-20~60°C	-20~60°C	-20~60°C	-20~60°C
Protect degree(F/B)	IP65	IP65	IP65	IP65
Grey / scale (bit)	≥13bit	≥13bit	≥13bit	≥13bit

# U-Taxi-A

## Taxi Roof Double-sided LED Display



1. 4G full network wireless communication;
2. Wirelessly broadcast text, pictures, videos and other advertising content in groups;
3. Low power consumption: Energy-saving circuit design reduces power consumption without affecting the overall display effect;
4. High brightness: Brightness up to 5000 CD/m<sup>2</sup>, The brightness adjustment function can set the brightness value of the display in time periods in the background to maintain the best display effect of the display at all times;
5. PC has high shock proof and high toughness, high heat and cold resistance, corrosion resistance, and high transparency;
6. After frosting, it can prevent glare and does not affect direct viewing under the sun.



# Parameter

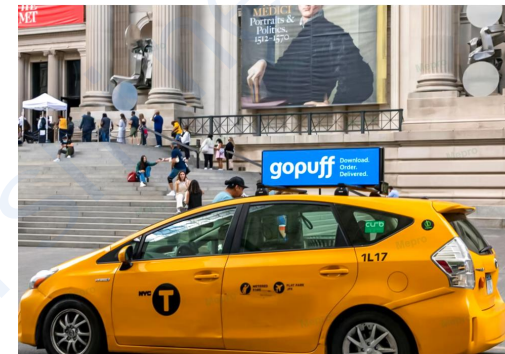
U-Taxi-A			
Pixel pitch(mm)	2.5mm	3.3mm	5mm
Resolution of module (dot)	384*128	288*96	192*64
Module size(mm)	320*320	320*320	320*320
Display size(mm)	960*320	960*320	960*320
Cabinet size(mm)	1106*408*141	1106*408*141	1106*408*141
Ave.consumption(W/m <sup>2</sup> )	150	150	150
Brightness(CD/m <sup>2</sup> )	5000	4500	4500
View angle(H/V)	160°	160°	160°
Refresh rate(Hz)	3840	3840	3840
Weight(KG)	17.2	17.2	17.2
Working temperature (°C)	-20 ~50°C	-20 ~50°C	-20 ~50°C
Protect degree(F/B)	IP65	IP65	IP65
Grey / scale (bit)	16bit	16bit	16bit

# U-Taxi-B

## Taxi Roof Double-sided LED Display



1. 4G full network wireless communication;
2. Wirelessly broadcast text, pictures, videos and other advertising content in groups;
3. Low power consumption: Energy-saving circuit design reduces power consumption without affecting the overall display effect;
4. High brightness: Brightness up to 5000 CD/m<sup>2</sup>, The brightness adjustment function can set the brightness value of the display in time periods in the background to maintain the best display effect of the display at all times;
5. PC has high shock proof and high toughness, high heat and cold resistance, corrosion resistance, and high transparency;
6. After frosting, it can prevent glare and does not affect direct viewing under the sun.



# Parameter

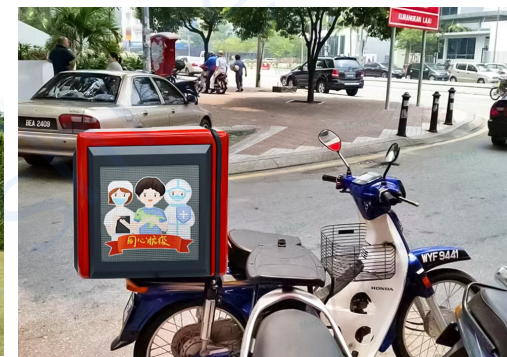
U-Taxi-B			
Pixel pitch(mm)	2.5mm	3.076mm	5mm
Resolution of module (dot)	384*192	312*104	192*64
Module size(mm)	320*320	320*320	320*320
Display size(mm)	960*320	960*320	960*320
Cabinet size(mm)	1136*386*139	1136*386*139	1136*386*139
Ave.consumption(W/m <sup>2</sup> )	130	130	100
Brightness(CD/m <sup>2</sup> )	5000	4500	4500
View angle(H/V)	160°	160°	160°
Refresh rate(Hz)	3840	3840	3840
Weight(KG)	16	16	16
Working temperature (°C)	-20 ~50°C	-20 ~50°C	-20 ~50°C
Protect degree(F/B)	IP65	IP65	IP65
Grey / scale (bit)	16bit	16bit	16bit

# U-Box

## Take Away LED Screen Box



1. FRP fiberglass cabinet, waterproof rubber pad for seal, moisture-proof;
2. Oxidized surface without rust or corrode;
3. Specially designed reinforced shock-proof structure and heat dissipation structure;
4. Suitable for complex road conditions. Ensure the installation strength;
5. Special shockproof & heat dissipation structural design;
6. Suitable for complex road conditions.



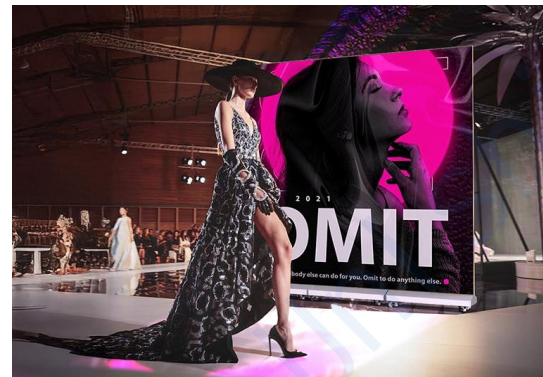
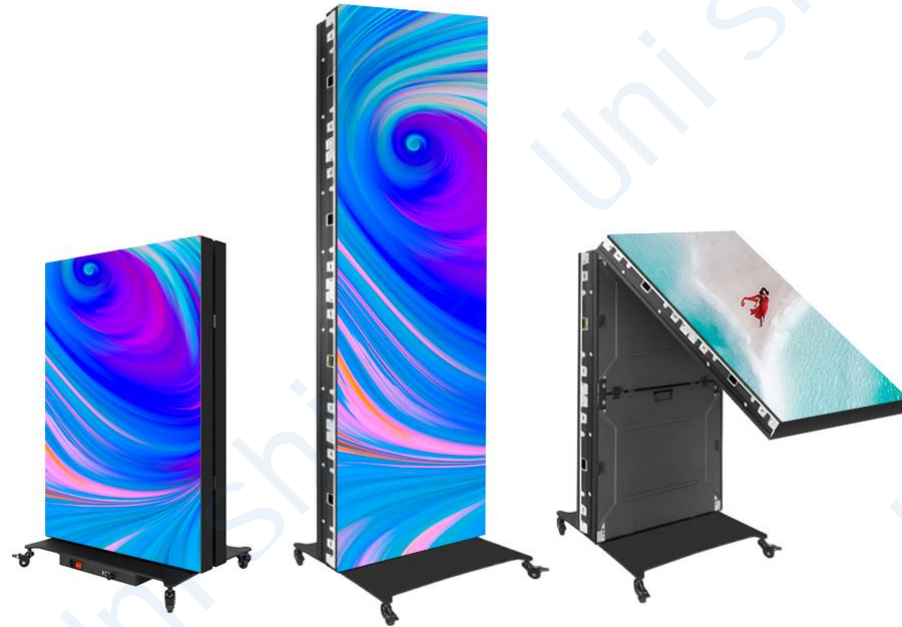
# Parameter

U-Box			
Pixel pitch(mm)	2.5mm	3mm	4mm
Resolution of module (dot)	128*128x3	128*112x3	96*84x3
Module size(mm)	320*320x3	384*336x3	384*336x3
Display size(mm)	320*320x3	384*336x3	384*336x3
Cabinet size(mm)	500*500*500	500*500*500	500*500*500
Ave.consumption(W/m <sup>2</sup> )	70	70	70
Brightness(CD/m <sup>2</sup> )	4500	4500	4500
View angle(H/V)	160°	160°	160°
Refresh rate(Hz)	3840	3840	1920
Weight(KG)	16	16	15
Working temperature (°C)	-20 ~50°C	-20 ~50°C	-20 ~50°C
Protect degree(F/B)	IP55	IP55	IP65
Grey / scale (bit)	16bit	13bit	16bit

# U-FP

Foldable Splicing Advertising Poster LED Display

1. Innovative folding design, space-saving;
2. Plug and Play, no any installation needed;
3. 6 units, 5-minute seamless setup;
4. GOB protection tech, durable and low maintenance;
5. Strong compatibility, support APP, wireless and cloud control.



# Parameter

U-FP		
Pixel pitch(mm)	2.5	2.5
Pixel density(dots/m <sup>2</sup> )	196608	196608
LED encapsulation	SMD2020	SMD2020
Driving method	1/32	1/64
Resolution of module (dot)	128*64	128*64
Module size(mm)	320*160	320*160
Display Area(mm)	640*1920	640*1920
OverallArea(mm)	650*1930*55	650*1930*55
Max.consumption(W/m <sup>2</sup> )	≤500	≤500
Ave.consumption(W/m <sup>2</sup> )	≤150	≤150
Brightness(CD/m <sup>2</sup> )	600	600
View angle(H/V)	140°/110°	140°/110°
Refresh rate(Hz)	3840	3840
Working temperature (°C)	-20~60°C	-20~60°C
Protect degree(F/B)	IP40	IP40
Grey / scale (bit)	≥14	≥14
Material	Die-casting Aluminum	Die-casting Aluminum



## U-TFP

Trifold Splicing Advertising Poster LED Display

1. Innovative folding design, space-saving;
2. GOB protection tech, durable and low maintenance;
3. One person can easily maneuver it across any flat surface;
4. Integrated dual speakers deliver immediate sound playback;
5. Strong compatibility, support APP, USB, WiFi, Network cable or 4G;
6. Secure and Convenient Transport with Custom Flight Cases.



# Parameter

U-TFP			
Pixel pitch(mm)	1.53	1.86	2.5
Pixel density(dots/m <sup>2</sup> )	1038336	710016	393216
LED encapsulation	SMD1212	SMD1515	SMD2020
Driving method	1/52	1/43	1/64
Resolution of module (dot)	208*104	172*86	128*64
Module size(mm)	320*160	320*160	320*160
Display Area(mm)	1280*1920	1280*1920	1280*1920
OverallArea(mm)	1280*1930*55	1280*1930*55	1280*1930*55
Max.consumption(W/m <sup>2</sup> )	≤500	≤500	≤500
Ave.consumption(W/m <sup>2</sup> )	≤150	≤150	≤150
Brightness(CD/m <sup>2</sup> )	600	500	500
View angle(H/V)	140°/110°	140°/110°	140°/110°
Refresh rate(Hz)	3840	3840	3840
Working temperature (°C)	-20~60°C	-20~60°C	-20~60°C
Protect degree(F/B)	IP40	IP40	IP40
Grey / scale (bit)	≥14	≥14	≥14
Material	Aluminum	Aluminum	Aluminum



# U-Booth

DJ Booth with Full Color LED Screen

1. 7680Hz high refresh rate, no tearing no flicker;
2. GOB protection tech, durable and low maintenance;
3. 3-sided panoramic immersive 270° field of view;
4. Ergonomic bottom foot groove-stay comfortable through all-night sets;
5. Built-in storage drawers;
6. Effortless wireless management via mobile or pc.



# Parameter

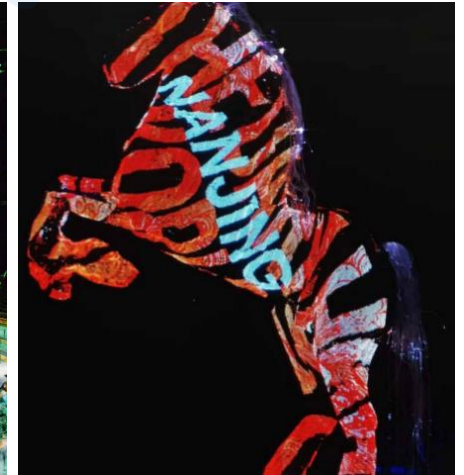
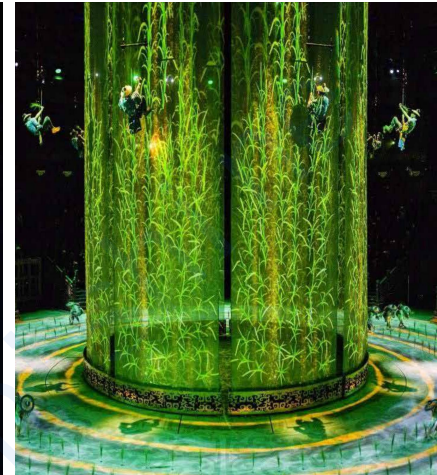
U-Booth	Arc / Right Angle / Custom
Pixel pitch(mm)	2.5
Pixel density(dots/set)	393216
LED encapsulation	SMD1515
Driving method	1/64
Resolution of module (dot)	128*64
Module size(mm)	320*160
Display Area(mm)	2560*960
OverallArea(mm)	1242*791*1052
Ave.consumption(W/m <sup>2</sup> )	≤650
Brightness(CD/m <sup>2</sup> )	700
View angle(H/V)	160°/160°
Refresh rate(Hz)	3840
Working temperature (°C)	-10~45°C
Protect degree(F/B)	IP30
Grey / scale (bit)	≥14
Material	Aluminum



# U-MagicStage

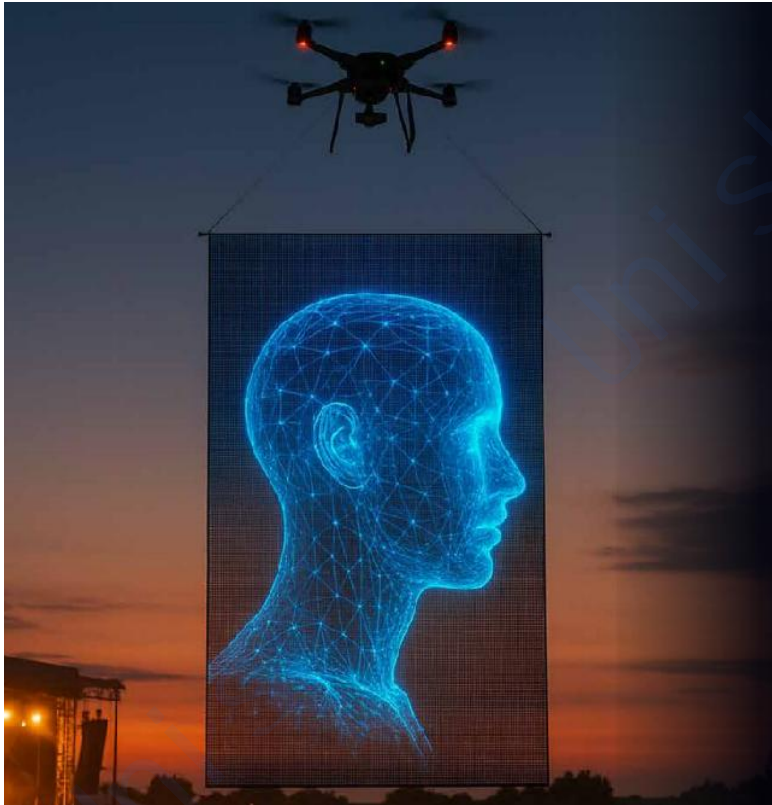
## Flexible Transparent LED Screen

1. V1 flame retardant ensure high safety, low smoke and self-extinguishing;
2. P15/P20:  $\geq 50\%$  transmittance;
3. P10: 40% to ensure ventilation safety;
4. P6.25: higher resolution, suitable for creating immersive holographic visual effects;
5. Free-form shaping and cutting;
6. Less than  $1.3\text{KG/m}^2$  and less than 4mm thick;  $90\text{m}^2$  in 1 CBM;
7. Magic blanket can achieve 16-bit grayscale.



# Parameter

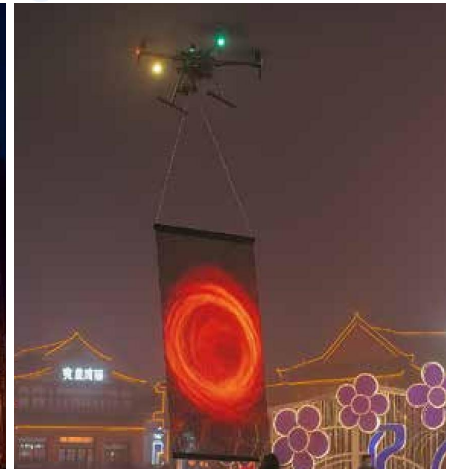
U-Magic Stage				
Pixel Pitch	6.25mm	10mm	15mm	20mm
Density	25,600dots/m <sup>2</sup>	10,000dots/m <sup>2</sup>	4,356dots/m <sup>2</sup>	2,500dots/m <sup>2</sup>
Brightness	1000nits	600nits	1200/2000nits	800/1800nits
Transmittance	4%	40%	67%	75%
Power	1100W/m <sup>2</sup> , 430W/m <sup>2</sup>	400W/m <sup>2</sup> , 160W/m <sup>2</sup>	300W/m <sup>2</sup> , 120W/m <sup>2</sup>	130W/m <sup>2</sup> , 40W/m <sup>2</sup>
Product Form	Mesh weaving			
Color	Full Color			
Gray Grade	16bit			
Working Voltage	DC5V (DC12V optional)			
Video Format	MP4 / MKV / AVI / MOV / 3GP			
Image Format	JPEG / GIF / BMP / PNG			
Protection Grade	IP43		IP65	
Lifespan	50000 hours			
Control System	Redfive / Novastar			
Working Temperature	-20°C ~ 50°C			
Storage Temperature	-40°C ~ 60°C			
Storage Humidity	P6.25/P10: Relative Humidity ≤60%; P15/P20: Relative Humidity ≤85%			
Usage Environment	P6.25/P10: Indoor ; P15/P20: Indoor and Outdoor			
Certificate	CE / RoHS / FCC			



# U-MagicSky

## Flyable LED Display

1. Energy-efficient with smart control: APP/PC, WIFI/4G;
2. Multi-pieces splicing technology;
3. Customizable sizes for versatile applications;
4. 90m<sup>2</sup> in 1 CBM, flexible and rollable, easy to transport;
5. ≤1.2kg/m<sup>2</sup> weight, ≤4mm thick, ultra-light and ultra-thin for seamless flight;
6. Up to 70% high transparency and wind permeability.



# Parameter

U-MagicSky			
Pixel Pitch	15mm	20mm	25mm
Density	4356dots/m <sup>2</sup>	2500dots/m <sup>2</sup>	1600dots/m <sup>2</sup>
Brightness	1200nits	800nits	500nits
Power Consumption	100W/m <sup>2</sup> , 30W/m <sup>2</sup>	60W/m <sup>2</sup> , 24W/m <sup>2</sup>	40W/m <sup>2</sup> , 20W/m <sup>2</sup>
Product Form	Mesh weaving		
Color	Full Color		
Gray Grade	16bit		
Working Voltage	DC5V (DC12V optional)		
Video Format	MP4 / MKV / AVI / MOV / 3GP		
Image Format	JPEG / GIF / BMP / PNG		
Protection Grade	IP54		
Lifespan	50000 hours		
Control System	Redfive / Novastar		
Working Temperature	-20°C ~ 50°C		
Storage Temperature	-40°C ~ 60°C		
Storage Humidity	Relative Humidity ≤85%		
Usage Environment	Indoor (Outdoor in the night)		
Certificate	CE / RoHS / FCC		

# Parameter

RF5 Drone Specification	RF5 E10	RF5 E15	RF5 E25	RF5 E35	RF5 E50
No-load Endurance	Max 40mins	Max 40mins	Max 40mins	Max 40mins	Max 40mins
Load Endurance	About 10~20mins	About 10~20mins	About 10~20mins	About 10~20mins	About 10~20mins
Flight Speed	80km/hour	80km/hour	100km/hour	100km/hour	100km/hour
Hovering Accuracy	0.35 m	0.35 m	0.35 m	0.35 m	0.35 m
Max Size	1115*1230*450mm	1365*1505*500mm	1780*1960*550mm	2190*2415*600mm	2650*2915*700mm
Folded Size	400*400*450mm	400*400*450mm	650*650*550mm	750*750*600mm	900*900*700mm
Load Capacity	10kg	15kg	25kg	35kg	50kg
Suggested Magicsky Size (H/V)	Popular size: 2*4m or less than 8sqm	Popular size: 3*4m or less than 12sqm	Popular size: 3*6m or less than 20sqm	Popular size: 4*8m or less than 32sqm	Popular size: 4*10m or less than 40sqm
Suggested Pixel Pitch	P15	P15	P20	P20	P20/25



# U-Kinetic

## Kinetic LED Matrix Screen

1. A huge customized LED wall made of hundreds of LED modules controls max 5000pcs display unit. The units to slide for ward then back respectively according to the video content. The user is able to make infinite creativity design to present an excellent 3D visual effect;
2. High-definition display Kinetic LED matrix screen adopts high-brightness LED lamp beads, which has the characteristics of high brightness, high contrast and high resolution, making the display effect more vivid and clear;
3. Adjustable motion mode: Kinetic LED matrix screen can be controlled by the motion software system to realize the expansion and contraction of the matrix screen, and the screen content and mechanical linkage can be realized according to actual needs;
4. Easy installation and maintenance: Kinetic LED matrix screen adopts a modular design, which is easy to install, and the modules can be disassembled and replaced, which is convenient for maintenance.



# Parameter

U-Kinetic		
Pixel pitch(mm)	1.9mm	2.5mm
Single Matrix Size(mm)	250*250	250*250
Matrix Resolution(dot)	128*128	100*100
Gaps Between Matrices(mm)	2	2
Max Forward stroke(mm)	200	200
Max Forward Speed(mm/s)	300	300
Cabinet Size(mm)	504x504(2x2)	504x504(2x2)
Cabinet Thickness(mm)	380	380
Cabinet Weight(KG)	26	26
Screen Brightness(cd/m2)	600-800	600-800
Refresh Rate(Hz)	3840	3840

# U-Art

## LED Art Screen



1. One screen for two purposes, never black screen;
2. Excellent Quality:LED painting screen is suitable for indoor and outdoor installation environment, resistant to high temperature, moisture and light;
3. High Customization: Any color and pattern can be customized, including solid color panels, logos, paintings, graffiti, etc;
4. High-definition Quality:The required resolution is 72-150 pixels/inch. The higher the pixel of the customized image, the more vivid and clear the display effect will be, and the better the engraved finished image effect will be;
5. Multiple Scenes:It can be used as a corporate decorative back around wall indoors and as a multifunctional simulated landscape decoration outdoors. It can also switch the screen display according to different scene requirements.



# Parameter

U-Art				
Application Environment	Box Size	Art Screen Model	Art Screen Panel	Refresh Rate
Indoor	Custom Made	P1.9	320*160mm	≥3840
		P2.5	320*160mm	≥3840
		P3	320*160mm	≥3840
		P4	320*160mm	≥3840
Outdoor	Custom Made	P3	320*160mm	≥3840
		P4	320*160mm	≥3840
		P5	320*160mm	≥3840
		P6	320*160mm	≥3840
		P8	320*160mm	≥3840
		P10	320*160mm	≥3840

# U-Rotation

## LED Mechanical Rotating Screen



1. Attention-Grabbing: The rotating design attracts pedestrians and viewers, increasing ad exposure;
2. Flexible Viewing Angles: They can showcase content from multiple angles, ideal for large events or crowded places;
3. Space-Efficient: They can display more content in limited spaces compared to traditional static screens;
4. Dynamic Effects: The motion adds visual energy, effectively conveying brand vitality and innovation;
5. High Brightness and Contrast: LED technology ensures bright images, maintaining clarity even in strong light;
6. Durability: LED screens typically have a long lifespan and high impact resistance, suitable for outdoor and harsh environments;
7. Energy Efficiency: LED displays usually consume less power, making them more environmentally friendly than traditional display technologies.



# Parameter

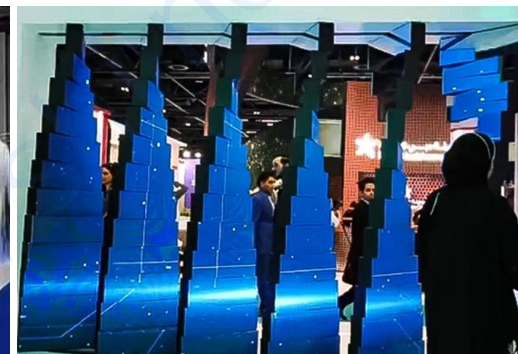
U-Rotation					
Model	P1.8	P2	P2.5	P4	P5
Pixel Pitch(mm)	1.8mm	2mm	2.5mm	4mm	5mm
LED Type	SMD1515	SMD1515	SMD2020	SMD1921	SMD2727
Application Environment	Indoor	Indoor	Indoor	Outdoor	Outdoor
Pixel(m <sup>2</sup> )	284444	250000	160000	62500	40000
Module size(mm)	320mm*160mm	320mm*160mm	320mm*160mm	320mm*160mm	320mm*160mm
LED Panel Size	Customize	Customize	Customize	Customize	Customize
Refresh rate(HZ)	≥3840	≥3840	≥3840	≥3840	≥3840
Cabinet Size	Customize	Customize	Customize	Customize	Customize
Brightness	800cd*1000cd	800cd*1000cd	800cd*1000cd	800cd*1000cd	800cd*1000cd
Brightness(CD/m <sup>2</sup> )	≤240	≤220	≤230	≤260	≤260
Avg Power(w/m <sup>2</sup> )	≤660	≤650	≤640	≤750	≤750
Maintenance Method	Front	Front	Front	Front	Front
Waterproof Level	IP32	IP32	IP32	IP65	IP65
Input Voltage	AC100V-240V	AC100V-240V	AC100V-240V	AC100V-240V	AC100V-240V
Life Span	100,000 hours	100,000 hours	100,000 hours	100,000 hours	100,000 hours



# U-R10

## 10-Layer LED Mechanical Rotating Screen

1. Supports wireless control and remote, is easy to operate.
2. Precision machinery drives 10 layers of independently rotating screens.
3. Breaking through the limitations of traditional flat-panel displays.
4. Not only can it achieve stunning double-sided display effects, it can also customize a unique combination of mirror and display according to your needs.
5. It can be used for advertising in public places such as shopping malls and exhibitions, brand activities, concerts, and other large-scale events.



# Parameter

U-R10 360°				
Model	P1.9 / P2.5			
Number of Layers	6	7	8	10
Single-sided screen size	750*250mm	750*250mm	750*250mm	750*250mm
Dimension	750*460*1830mm	750*460*2080mm	750*460*2330mm	750*460*2860mm
Base Dimension	750*460*300mm	750*460*300mm	750*460*300mm	750*460*300mm
Refresh Rate	≥3840Hz	≥3840Hz	≥3840Hz	≥3840Hz
Brightness	600-900 cd/m <sup>2</sup>	600-900 cd/m <sup>2</sup>	600-900 cd/m <sup>2</sup>	600-900 cd/m <sup>2</sup>
Rotation Mode	Optional(different rotation mode can be selected depending on the screen requirements)			
Rotation Speed	Adjustable (running speed can be adjusted according to user or screen requirements)			
Equipment Installation	The equipment is equipped with a chassis, eliminating the need of a base foundation installation			
Flight Case Size	1950*950*680 mm	2230*950*690 mm	2450*950*690 mm	2980*980*680 mm
Net Weight	150	169	199	213
Gross Weight	232	257	291	317
Application Environment	Indoor / Outdoor	Indoor / Outdoor	Indoor / Outdoor	Indoor / Outdoor
Control Mode	PC / APP	PC / APP	PC / APP	PC / APP

# U-KS

## Kinetic LED Spherical Screen



1. 360-Degree Viewing: The spherical design allows content to be viewed from all angles, enhancing visual impact for viewers;
2. Attention-Grabbing: Its unique shape and dynamic effects quickly attract attention, improving advertising effectiveness;
3. Strong Interactivity: They can engage audiences interactively, enhancing participation, especially in events, exhibitions, and malls;
4. Diverse Content Display: Capable of showcasing videos, animations, and real-time data, providing a rich visual experience;
5. Weather Resistance: Typically designed for durability, making them suitable for outdoor use in harsh conditions with a long lifespan;
6. Space-Efficient: The spherical design creates significant visual impact in limited spaces, ideal for urban environments and high-traffic areas;
7. Energy Efficiency: LED technology is low in energy consumption, helping reduce long-term operational costs.



# Parameter

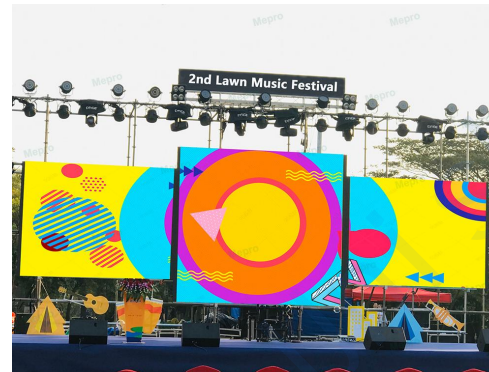
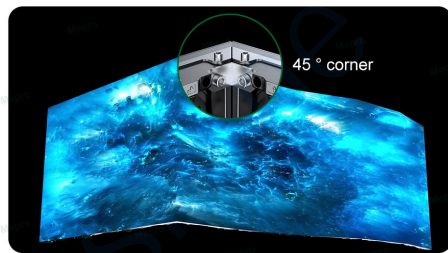
U-KS				
Mechanical Structure	Motor Mode	Telescopic Speed	telescopic Length	Sport Control
Parameter	Servo motor	100mm/s	250mm	Software
Model	P2.5		P2	
Pixel Pitch(mm)	2.5		2	
Diameter(m)	1.5		1.5	
LED Type	SMD1515		SMD1515	
Pixel Density(dot/m <sup>2</sup> )	160000		250000	
Avg Power(w/m <sup>2</sup> )	180		180	
Maximum Power(w/m <sup>2</sup> )	550		550	
Refresh Rate(HZ)	≥3840		≥3840	
Input Voltage	AC100-240V, 50-60Hz			
Life Span	100,000			



# U-Rent

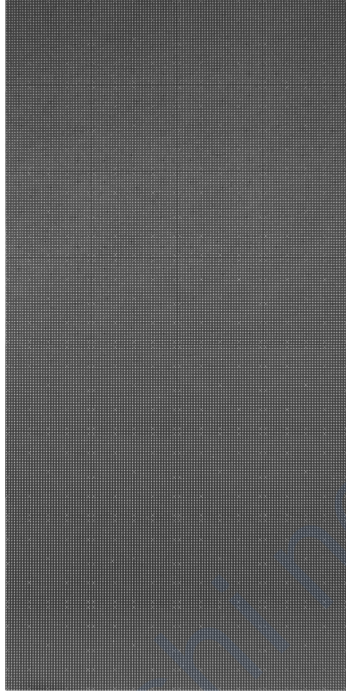
## P2.6/2.97/3.91 Rental Stage LED Display

1. ADC12 high-strength die-cast aluminum cabinet, can be frequently assembled and disassembled without deformation;
2. The extremely simple and practical design, firm handle, convenient fast lock, the simplest and most practical;
3. High reliability: fully enclosed module, front and rear IP65, high stability;
4. Multiple shape: 500\*500/1000mm cabinet; accessible to mixed assembly;
5. The fast lock connection of the cabinet; multi-functional, can be fixed, stacked, lifting;
6. Optional magnetic module, power box and module can be assembled and disassembled from front; maintenance of rental installation is convenient;
7. Hard connection of module: the self-locking cable between cabinet: safe and beautiful
8. No fan, noise  $\leq 40\text{DB}$ ; Does not affect the audiovisual effect;
9. 3840 high refresh, 1/3000S shutter shooting, no scanning line, shadow;



# Parameter

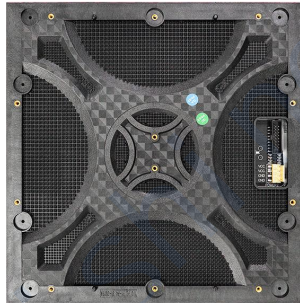
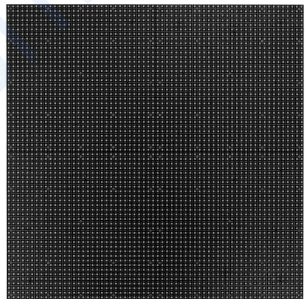
U-Rent-H	
Pixel pitch(mm)	3.91mm
Pixel density(dots/m <sup>2</sup> )	65536 Dots/m <sup>2</sup>
LED encapsulation	SMD1921
Driving method	1/16
Resolution of module (dot)	64*64 Dots
Module size(mm)	250*250*18mm
Module consumption(W)	27W
Working voltage(V)	DC4.6V
Max.consumption(W/m <sup>2</sup> )	800W/m <sup>2</sup>
Ave.consumption(W/m <sup>2</sup> )	400W/m <sup>2</sup>
Brightness(CD/m <sup>2</sup> )	4500CD/m <sup>2</sup>
Color temperature(K)	3000-10000K adjustable
View angle(H/V)	H: 140°; V: 120°
Refresh rate(Hz)	3840Hz
Working temperature (°C)	- 10~50°C
Protect degree(F/B)	IP65
Grey / scale (bit)	13bit



# U-Rent-J

## P2.6/2.97/3.91 Rental Stage LED Display

1. Ultra-thin: made of aluminum profiles, ultra-thin design, only 12kg/m<sup>2</sup>;
2. Ultra-wide viewing angle: the horizontal viewing angle can reach 160°, and the vertical can reach 140°;
3. Simple installation: Firm handle, fast lock and connector design, precise positioning with locating pin;
4. Seamless splicing: ADC12-level high-strength die-casting aluminum alloy cabinet, can be assembled and disassembled frequently without deformation, high flatness, seamless splicing;
5. Wide usage: It is suitable for various events such as shopping malls, weddings, conferences, concerts, conferences, etc. It can also be used for fixed installations.



# Parameter

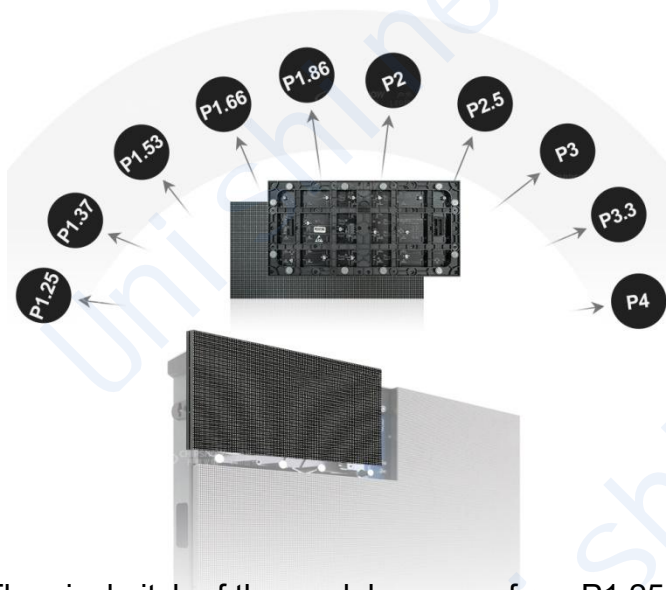
U-Rent-J	
Pixel pitch(mm)	3.91mm
Pixel density(dots/m <sup>2</sup> )	65536 Dots/m <sup>2</sup>
LED encapsulation	SMD2020
Driving method	1/32
Resolution of module (dot)	64*64 Dots
Module size(mm)	250*250*18mm
Module consumption(W)	25W
Working voltage(V)	AC220V±10%
Max.consumption(W/m <sup>2</sup> )	400W/m <sup>2</sup>
Ave.consumption(W/m <sup>2</sup> )	200W/m <sup>2</sup>
Brightness(CD/m <sup>2</sup> )	400-600CD/m <sup>2</sup>
Color temperature(K)	3000-10000K adjustable
View angle(H/V)	H: 160°; V: 140°
Refresh rate(Hz)	1920Hz
Working temperature (°C)	- 10~40°C
Protect degree(F/B)	IP40
Grey / scale (bit)	13bit



# U-MAX-B

## Indoor Front Maintenance Wall-mounted Display

1. High precision: Die-cast aluminum cabinet, high precision and good flatness;
2. Good compatibility: The cabinet can be quickly replaced with module of the pixel pitch from P1.25 to P4, and images can be upgraded to higher quality with lower cost;
3. Ultra-light and thin: Die-cast aluminum cabinet, light-weighted, thin, beautiful appearance;
4. Wall-mounted installation: modules, power supplies, and system cards can be fully maintained from the front; space-saving, suitable for high-end commercial display occasions;
5. Ratio: Can be assembled to 4:3, 16:9 large screens; the same video source ratio as LCD, and can directly replace the original LCD. Widely used in auditorium stage, conference room, banquet hall, exhibition studio, traffic command, security monitoring and other occasions.



The pixel pitch of the modules range from P1.25 to P4



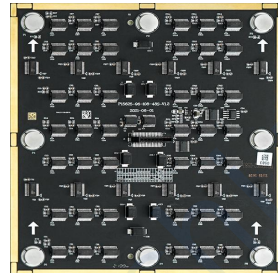
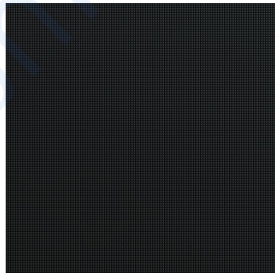
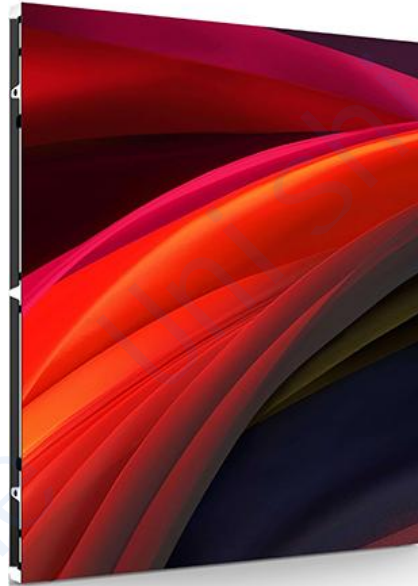
# Parameter

U-MAX-B			
Pixel pitch(mm)	2.5 mm	3.3 mm	4 mm
Pixel density(dots/m <sup>2</sup> )	160000 Dots/m <sup>2</sup>	90180 Dots/m <sup>2</sup>	62500 Dots/m <sup>2</sup>
LED encapsulation	SMD1515	SMD2020	SMD2020
Driving method	1/32S	1/24S	1/20S
Resolution of module (dot)	128*64 Dots	96*48 Dots	80*40 Dots
Module size(mm)	320*160 mm	320*160 mm	320*160 mm
Module consumption(W)	18.5W	22W	20W
Working voltage(V)	DC4.6V	DC4.6V	DC4.6V
Max.consumption(W/m <sup>2</sup> )	360W/m <sup>2</sup>	430W/m <sup>2</sup>	390W/m <sup>2</sup>
Ave.consumption(W/m <sup>2</sup> )	108W/m <sup>2</sup>	128W/m <sup>2</sup>	130W/m <sup>2</sup>
Brightness(CD/m <sup>2</sup> )	800 CD/m <sup>2</sup>	800 CD/m <sup>2</sup>	800 CD/m <sup>2</sup>
Color temperature(K)	6000K-8000K	6000K-8000K	6000K-8000K
View angle(H/V)	H: 120°; V: 120°	H: 120°; V: 120°	H: 120°; V: 120°
Refresh rate(Hz)	1920-3840Hz	1920-3840Hz	1920-3840Hz
Working temperature (°C)	-20~50°C	-20~50°C	-20~50°C
Protect degree(F/B)	IP40	IP40	IP40
Grey / scale (bit)	14bit	14bit	14bit

# U-Pad-COB

## 4K/8K Indoor Full Color Led Display

1. High reliability: COB modules, moisture proof, Anti-collision, Scrubable lamp surface ,low power consumption, fast heat dissipation, effectively prolong the service life of the chip;
2. Good consistency ,seamless assemble, available for 2K/4K/8K solutions;
3. Magnetic modular design, it can be mounted to the wall and maintained from front, save space and guarantee worry-free operation of large screen;
4. Constant current drive chip,low power dissipation, uniform light,meet the high refresh rate/contrast ratio/gray level requirements;
5. Support point by point calibration function, insure the color and brightness uniformity of whole screen after assemble, and improve visual performance;
6. 160°Ultra large horizontal and vertical viewing angel, Soft and not dazzling image, better visual performance;
7. Widely applied to professional application, such as security monitoring/command and monitor system/conference room/museum/display/industrial design/exhibition, where need HD images.



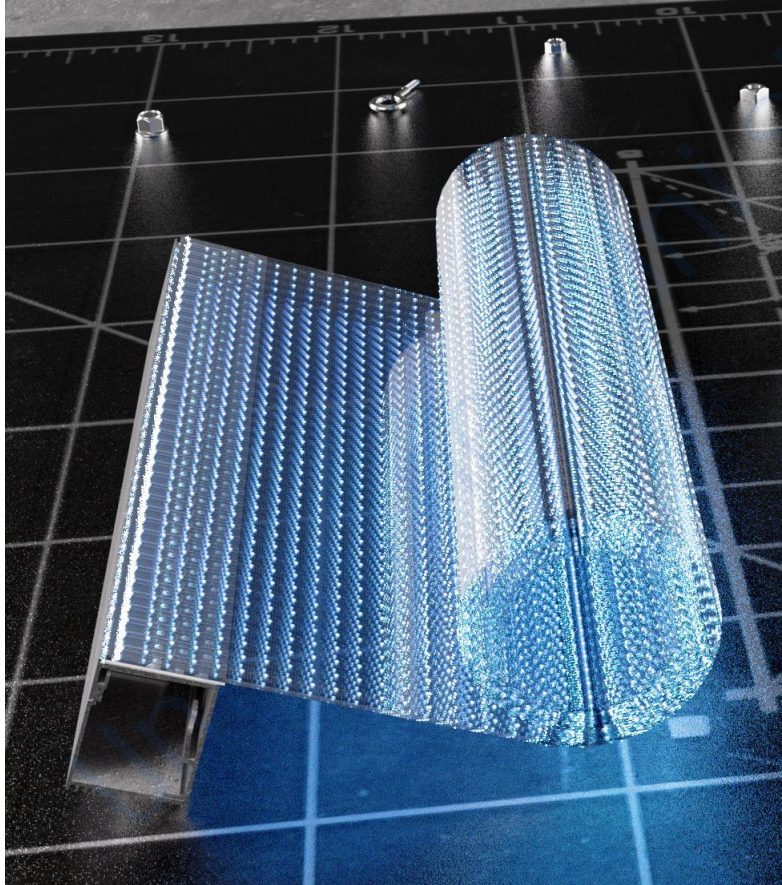
# Parameter

U-Pad-COB				
Pixel pitch(mm)	0.93mm	1.25mm	1.56mm	1.875mm
Pixel density(dots/m <sup>2</sup> )	1137778 Dots/m <sup>2</sup>	640000 Dots/m <sup>2</sup>	409600 Dots/m <sup>2</sup>	284444 Dots/m <sup>2</sup>
LED encapsulation	Inverted COB	Inverted COB	Inverted COB	Inverted COB
Driving method	-	-	-	-
Resolution of module (dot)	160*180 Dots	120*135 Dots	96*108 Dots	80*90 Dots
Module size(mm)	150*168.75mm	150*168.75mm	150*168.75mm	150*168.75mm
Module consumption(W)	10W	9W	9W	8W
Working voltage(V)	DC2.8V/3.8V	DC4.2V	DC4.2V	DC4.2V
Max.consumption(W/m <sup>2</sup> )	380W/m <sup>2</sup>	330W/m <sup>2</sup>	330W/m <sup>2</sup>	320W/m <sup>2</sup>
Ave.consumption(W/m <sup>2</sup> )	120W/m <sup>2</sup>	110W/m <sup>2</sup>	110W/m <sup>2</sup>	110W/m <sup>2</sup>
Brightness(CD/m <sup>2</sup> )	300~600CD/m <sup>2</sup>	300~600 CD/m <sup>2</sup>	300~600 CD/m <sup>2</sup>	550 CD/m <sup>2</sup>
Color temperature(K)	9300K	9300K	9300K	9300K
View angle(H/V)	H: 160°; V: 160°	H: 160°; V: 160°	H: 160°; V: 160°	H: 160°; V: 160°
Refresh rate(Hz)	2880-3840Hz	2880-3840Hz	2880-3840Hz	2880-3840Hz
Working temperature (°C)	- 10~40°C	-10~40°C	-10~40°C	-10~40°C
Protect degree(F/B)	IP54	IP54	IP54	IP54
Grey / scale (bit)	≥13bit	≥13bit	≥13bit	≥13bit

# U-Trans

## Flexible LED Film Screen

1. LED: light drive in one, independent research and development, high reliability, mini LED device, industry leading;
2. High transmittance: The transmittance is more than 90%, which does not affect the glass daylighting;
3. Easy to install: without steel structure, just stick the thin screen slightly and connect the power signal;
4. Light and thin: as thin as 2.5mm, as light as 5kg/m<sup>2</sup>.

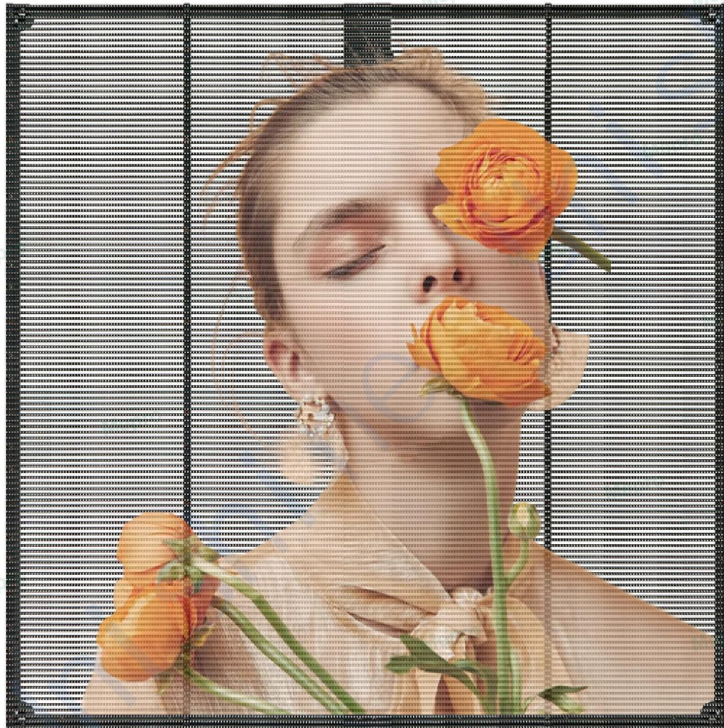


# Parameter

U-Trans-Flex						
Pixel pitch(mm)	6	6.25	8	10	15	20
Pixel density(dots/m <sup>2</sup> )	27777	25600	16500	10000	6625	2500
LED encapsulation	REE1515	REE1515	REE1515	REE1515	REE2022	REE2022
Pixel composition	R1G1B1	R1G1B1	R1G1B1	R1G1B1	R1G1B1	R1G1B1
Driving method	Static	Static	Static	Static	Static	Static
Resolution of module (dot)	136*64	160*40	125*50	100*40	66*26	50*20
Module size(mm)	816*384	1000*400	1000*400	1000*400	990*390	1000*400
Input voltage (V)	AC110~240	AC110~240	AC110~240	AC110~240	AC110~240	AC110~240
Max.consumption(W/m <sup>2</sup> )	400	600	400	400	400	400
Ave.consumption(W/m <sup>2</sup> )	200	200	200	200	200	200
Brightness(CD/m <sup>2</sup> )	2000/4000	2000/4000	2000/4000	2000/4000	2000/4000	2000/4000
Viewing angle(H/V)	160°	160°	160°	160°	160°	160°
Transparency (%)	90%	90%	92%	94%	94%	95%
Refresh rate(Hz)	3840	3840	3840	3840	3840	3840
Working temperature(°C)	-20~55°C	-20~55°C	-20~55°C	-20~55°C	-20~55°C	-20~55°C
Weight (kg)	1.3	1.3	1.3	1.3	1.3	1.3
Thickness (mm)	2.5	2.5	2.5	2.5	2.5	2.5
Grey / scale (bit)	16	16	16	16	16	16

# U-Trans

## 3.91x7.81 Indoor Transparent Display



1. Light, thin, transparent and easy to install, it is mainly aimed at the integrated transparent display screen solution for commercial and supermarket window advertisements;
2. Light and thin: All-aluminum profile structure, the cabinet is only 6Kg/m<sup>2</sup>, which is 75% lighter than the traditional outdoor LED screen; the thickness of the cabinet is 80cm, which is 50% thinner than the traditional display screen; it is integrated with the window and glass curtain wall without affecting original structure;
3. High transparency: It reduces the blockage of structural components to the line of sight and maximizes the perspective effect. The light transmittance is 55%~78%. After lighting, the light bar is almost invisible at a distance of 3 meters or more;
4. Easy to install: It can be spliced by quick lock, the installation is simple and fast, and the labor cost is saved;
5. High brightness: 800-7000CD/M<sup>2</sup> brightness is adjustable, indoor installation is not dazzling, and semi-outdoor installation has higher brightness, which can ensure clear visibility under daylight conditions;
6. Energy saving: Using high-brightness LED lights, the power consumption is lower under the same brightness conditions, which can reduce power consumption by more than 50%;
7. Good: Standard modular design, convenient for production, installation, transportation, 100% full inspection and factory inspection, high quality assurance, and better user experience for customers.



# Parameter

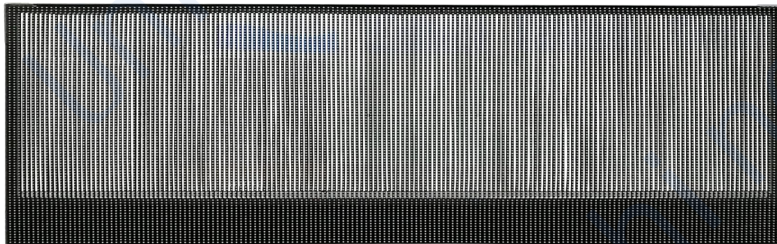
U-Trans	
Pixel pitch(mm)	3.9*7.8mm
Pixel density(dots/m <sup>2</sup> )	32768 Dots/m <sup>2</sup>
LED encapsulation	1921
Driving method	8S
Resolution of module (dot)	126*16 Dots
Module size(mm)	1000*1000mm
Module consumption(W)	20W
Working voltage(V)	DC5V
Max.consumption(W/m <sup>2</sup> )	400W/m <sup>2</sup>
Ave.consumption(W/m <sup>2</sup> )	260W/m <sup>2</sup>
Brightness(CD/m <sup>2</sup> )	3500~4000 CD/m <sup>2</sup>
Transparency(Hz)	55%~78%
Viewing angle	H: 120°; V: 120°
Refresh rate	1920~3840Hz
Working temperature	-10~40°C
Protect degree(F/B)	IP30
Grey level	14bit

# U-Bus

## P3.1x5.57 Rear Window



1. 4G all network wireless communication (customized according to the country), which can broadcast text, pictures, videos and so on wirelessly;
2. High refresh rate Chip and wide view angle, uniform picture proportion, good image quality without flickering, and excellent advertising effect;
3. Ultra-transparent, invisible power supply and control card design, no shelter for the light, and no influence to the sight of the driver and passengers;
4. Wide voltage power(DC9-36V), with delayed start and reserve screen off function, no influence for the start and reserve of the car;
5. Safety guarantee: imported TI Chip, professional vehicle power supply, with reverse connection, over-current, and short circuit protection, stable and safe;
6. Integrated design, no flat cable throughout the lamp board, more stable and shockproof; Low failure rate, more convenient maintenance.

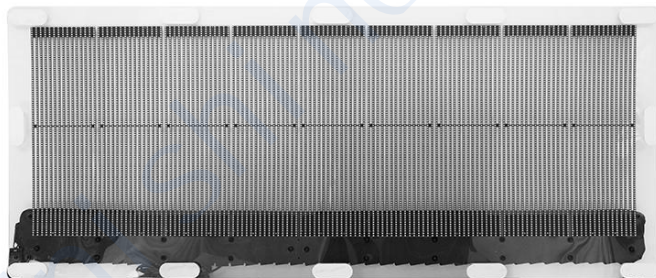


# Parameter

U-Bus Rear Window	
Pixel pitch(mm)	V3.1*H5.57
Pixel density(dots/m <sup>2</sup> )	57899 Dots/m <sup>2</sup>
LED encapsulation	SMD2020
Driving method	1/15S
Resolution of module (dot)	24*90 Dots
Module size(mm)	133.68*279mm
Module consumption(W)	8.5W
Working voltage(V)	DC5V
Max.consumption(W/m <sup>2</sup> )	≤190W/m <sup>2</sup>
Ave.consumption(W/m <sup>2</sup> )	≤60W/m <sup>2</sup>
Brightness(CD/m <sup>2</sup> )	5000CD/m <sup>2</sup>
Color temperature(K)	6000~8000K
View angle(H/V)	H: 160°; V: 160°
Refresh rate(Hz)	≥1920Hz
Working temperature (°C)	-40~85°C
Protect degree(F/B)	IP40
Grey / scale (bit)	16bit

# U-Taxi-Rear

## P6x2.92 COB 3in1 Rear Window



1. COB integrated encapsulation transparent display panel + mobile phone 4G control system play card + GPS positioning + WIFI function, easy to operate and play;
2. Advertising brightness can be adjusted according to the intensity of the light, more energy-efficient, slower Leds attenuation, and longer life span;
3. The light transmittance at the hollow of the transparent display panel reaches 52%, and the addition of the reversing screen function does not affect the reversing vision of the driver;
4. The flame-retardant semi-PU composite fabric protects HUB boards, control cards, 4G cards, etc., plus a soft bag that has better bending ability during mounting;
5. Weight of the screen is less than 1.5kg, and it can be installed quickly and without damaging the glass or bracket. The screen body and the flexible deformation two-dimensional bending fit the mounting surface;
6. Can play graphic advertisements, subtitles, videos, lunar calendar, dial, timing, temperature, humidity, announcements, weather forecasts, etc..



# Parameter

U-Taxi Rear Window	
Pixel pitch(mm)	6X2.92mm
Pixel density(dots/m <sup>2</sup> )	57142 Dots/m <sup>2</sup>
LED encapsulation	COB 3 in 1
Driving method	1/8S
Resolution of module (dot)	15*96 Dots
Module size(mm)	90*280*2mm
Module consumption(W)	12.5W
Working voltage(V)	DC4.2V
Max.consumption(W/m <sup>2</sup> )	125W/m <sup>2</sup>
Ave.consumption(W/m <sup>2</sup> )	35W/m <sup>2</sup>
Brightness(CD/m <sup>2</sup> )	4300 CD/m <sup>2</sup>
Color temperature(K)	6500 K
View angle(H/V)	H: 120°; V: 120°
Refresh rate(Hz)	1920Hz
Working temperature (°C)	-20~50°C
Protect degree(F/B)	IP65/IP54
Grey / scale (bit)	13bit

# U-TAG COB SHELF

Smart Cob Shelf Edge Led Display Screen use in supermarket

1. Indoor 300 x 60mm profile aluminum cabinet. Compatible pitch: COB1.25/GOB1.87 mm  
Size flexible splicing, design for shelf use. Freely connect units right and left (The max length to 4.8m);
2. Creative installation design, supporting L-shape plate mounted and hook hanging installation;
3. High protection, high stability. COB and GOB package technology option. XT60 standard network port, two-sides power input;
4. Excellent Display performance;
5. Wide viewing angle, high contrast ratio Handy control ways, supporting USB, Wi-Fi, 4G, network control etc.



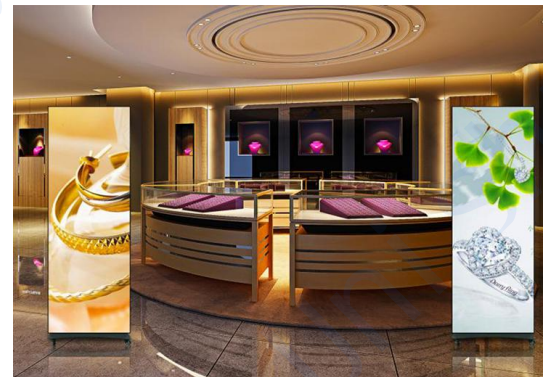
# Parameter

U-TAG			
Pixel pitch(mm)	COB 1.25mm	SMD 1.87mm	GOB 1.87mm
Resolution of module (dot)	120*45 Dots	82*30Dots	82*30 Dots
Module size(mm)	150*56.25mm	150*56.25mm	150*56.25mm
Display Size (mm)	300*60*23	300*60*23	300*60*23
Driving method	1/45	1/30	1/30
Cabinet Material	Aluminum cabinet	Aluminum cabinet	Aluminum cabinet
Control Method	USB/4G/Network Port/WIFI	USB/4G/Network Port/WIFI	USB/4G/Network Port/WIFI
Working temperature (°C)	- 10~40°C	- 10~40°C	- 10~40°C
Protect degree(F/B)	IP65	IP65	IP65
Grey / scale (bit)	≥13bit	≥13bit	≥13bit

# U-Poster

## Intelligent Advertising Mirror LED display

1. Plug and play – No need installation: can freely watch and play video, audio or pictures anytime and anywhere, and update the content stored in the built-in media player through WIFI or USB, with a simple and clear operation interface;
2. Ultra-light and thin - support any installation method: combine the latest technology and industrial design of the current industry, present a fashionable and simple all-aluminum frame with integrated appearance, body painting, thickness of 35mm, weight of 35kg, can be installed freely, and save space;
3. Intelligent module - wireless splicing: three-level MCU management and two-level Inturl Cyclone4 management realize self-communication and self-management of management display module, and realizing system zeroing, simple keys on the body and convenient operation;
4. Intelligent management - network cluster management: use DDR and fish storage chips to record, store and manage the data information of the display module;



# Parameter

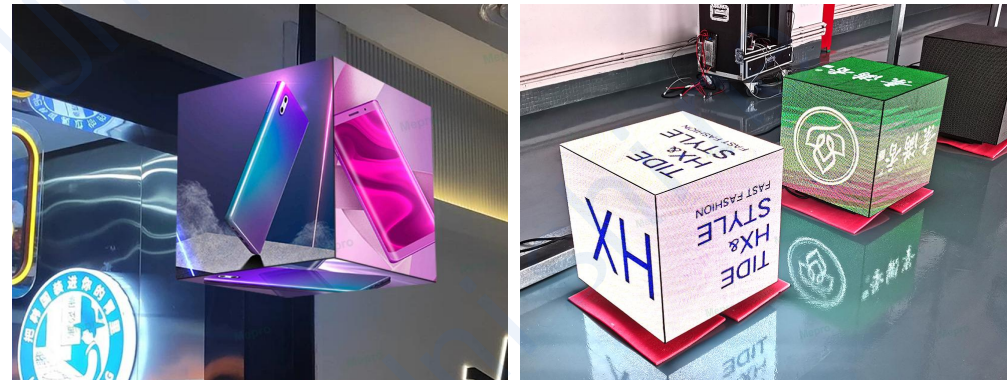
U-Poster	
Pixel pitch(mm)	2.5
Pixel density(dots/m <sup>2</sup> )	160000
LED encapsulation	SMD2121/1515
Driving method	1/32
Resolution of module (dot)	128*64
Module size(mm)	320*160
Module consumption(W)	≤27
Working voltage(V)	4.6
Max.consumption(W/m <sup>2</sup> )	≤800
Ave.consumption(W/m <sup>2</sup> )	≤300
Brightness(CD/m <sup>2</sup> )	1200
Color temperature(K)	6000~8000
View angle(H/V)	120°
Refresh rate(Hz)	1920~3840
Working temperature (°C)	-10~85°C
Protect degree(F/B)	IP40
Grey / scale (bit)	≥14



# U-Cube

## Cube-shaped LED Screen

1. Industry outdoor minimum distance products, waterproof grade Ip65;
2. Any size can be designed and manufactured according to customer requirements;
3. 360°Visual angle, any angle can feel good visual effect;
4. Convenient installation, support a variety of installation methods;
5. 5 days fast delivery.



# Parameter

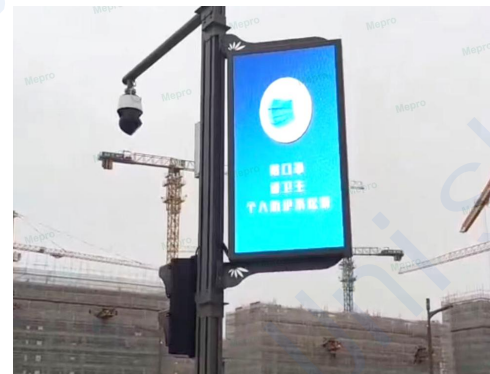
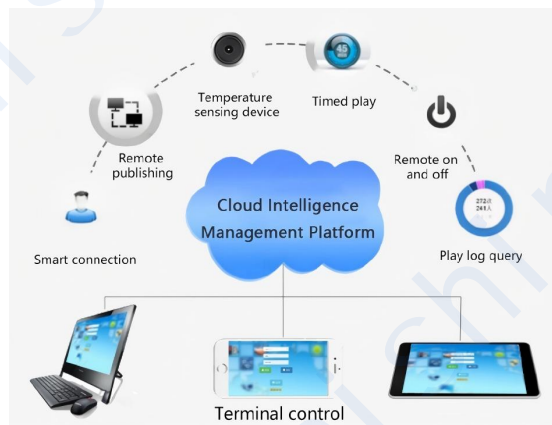
U-Cube	
Pixel pitch(mm)	2.5mm
Pixel density(dots/m <sup>2</sup> )	160000 Dots/m <sup>2</sup>
LED encapsulation	SMD2020
Driving method	1/40
Resolution of module (dot)	80*80Dots
Module size(mm)	200*200mm
Module consumption(W)	15W
Working voltage(V)	5V
Max.consumption(W/m <sup>2</sup> )	240W/set
Ave.consumption(W/m <sup>2</sup> )	≤200W/set
Brightness(CD/m <sup>2</sup> )	600CD/m <sup>2</sup>
Color temperature(K)	6000K-8000K
View angle(H/V)	H:140°; V:140°
Refresh rate(Hz)	3840Hz
Working temperature (°C)	-20 ~60°C
Protect degree(F/B)	IP40
Grey / scale (bit)	13bit



# U-Pole

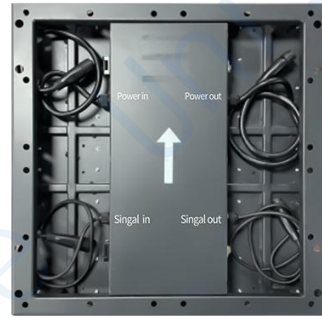
## Smart Light Pole LED Display

1. Cluster management, supporting multi-level grouping of terminals and users, and multi-level permission settings for users;
2. Easy to expand: Modular design, easy to expand software functions;
3. Support wired, wireless (WiFi, 3G, 4G) and other networking methods;
4. Real-time information release: immediate release of emergency information; automatic generation of play logs;
5. One screen can play text, video and pictures at the same time;
6. Fixed-point playback, different content can be played on the same screen, and the same content can be played on different screens;
7. Adjustment of screen brightness, audio volume, one-key software version upgrade, etc.



# Parameter

U-Pole			
Pixel pitch(mm)	2.5mm	2.5mm	2.5mm
Resolution of module (dot)	128*256 Dots	192*384 Dots	256*512 Dots
Module size(mm)	160*160mm	160*160mm	160*160mm
Display Size (mm)	320*640	480*960	640*1280
External Size(mm)	420*740*105	580*1060*105	740*1380*105
Brightness(CD/m <sup>2</sup> )	5000~7000CD/m <sup>2</sup>	5000~7000CD/m <sup>2</sup>	5000~7000CD/m <sup>2</sup>
Weight(kg)	13	22	34
Cabinet Material	Cast Aluminum Profile/Sheet Metal	Cast Aluminum Profile/Sheet Metal	Cast Aluminum Profile/Sheet Metal
Control Method	4G/Network Port/WIFI	4G/Network Port/WIFI	4G/Network Port/WIFI
Maintenance Mode	Back Maintenance	Back Maintenance	Back Maintenance
Suitable Post Height (m)	2.5~4	4~6	6~9
Working temperature (°C)	- 10~40°C	- 10~40°C	- 10~40°C
Protect degree(F/B)	IP65	IP65	IP65
Grey / scale (bit)	≥13bit	≥13bit	≥13bit



# U-Floor

## LED Floor Display with Interactive Function

1. Waterproof and moisture-proof: The bottom shell, mask, power cable and signal cable of the indoor floor LED screen module are all equipped with waterproof and moisture-proof materials, made of raw materials with low moisture absorption coefficient, and the front and rear of the cabinet can reach the protection grade of IP40;
2. Anti-slip and wear-resistant: The mask of the intelligent interactive floor Led screen is made of imported PC material, which has high wear resistance and flexibility, as well as good resistance to high and low temperatures. The mask has better anti-slip and weight-bearing functions;
3. Super load-bearing: Each component of the intelligent interactive LED floor screen can have an ultimate load-bearing capacity of up to 2 tons per square meter;
4. Mute heat dissipation: The power box adopts a special heat dissipation device to achieve a better mute heat dissipation function.



# Parameter

U-Floor	
Pixel pitch(mm)	3.91mm
Pixel density(dots/m <sup>2</sup> )	65536 Dots/m <sup>2</sup>
LED encapsulation	SMD1921
Driving method	1/16S
Resolution of module (dot)	64×64 Dots
Module size(mm)	250X250mm
Module consumption(W)	50W
Working voltage(V)	DC5V
Max.consumption(W/m <sup>2</sup> )	800W/m <sup>2</sup>
Ave.consumption(W/m <sup>2</sup> )	260W/m <sup>2</sup>
Brightness(CD/m <sup>2</sup> )	2500CD/m <sup>2</sup>
Color temperature(K)	3200K-9300K
View angle(H/V)	H: 120°; V: 120°
Refresh rate(Hz)	2000Hz
Working temperature (°C)	-20~50°C
Protect degree(F/B)	IP40
Grey / scale (bit)	13bit

# U-Poster-LCD

## 32"/43"/55" Smart Outdoor Signage

1. Various Control Methods: The new design puts the speaker on the front, which greatly improves the sound effect, and uses the metal wire drawing process, with the piano lacquer, which is not only beautiful but also waterproof;
2. IP65 Rated Weatherproof Enclosure: The outer casing has an IP65 rating which means it keeps out all airborne swarf, dust, and other particles and is protected from any wet weather conditions, broadening the range of possible environments;
3. Secure Locking Bar: Advanced locking mechanism for simpler operation;
4. Ensuring the stability and safety of the display;
5. Long Running Time: The lithium-ion battery revolutionizes the way you can use digital signage. This commercial grade slimline battery solution gives you over 14 hours running time. (environment <math>< 0^{\circ}</math>, the running time will decrease).



# Parameter

U-Poster-LCD	
Products module	43" Smart LCD
Display Model	BOE IPS High TNI 105°C
Resolutions	1920x1080 (FHD)
Display Area (mm)	940.896(H)*529.254(V)
Aspect Ratio	0.672916667
Brightness (cd/m <sup>2</sup> )	1500
Colour	16.7M
Viewing Angle	178°
Contrast Ratio	4000:1
Touch	Optional function
Charging Time	7 hours
Working Time	14 hours
Batter Capacity	50000mAh
Power Supply	24V
Power Consumption	90W
Energy	1088.54Wh
Outside color	7 colors available



**Thank you!**

**Unishine** Global Provider of LED Display Solutions

Website: [unishineled.com](http://unishineled.com)

Email: [director@unishineled.com](mailto:director@unishineled.com)